



**UNITED WAY
OF OLMSTED COUNTY**

ANNUAL REPORT 2018

BE BOLD, LIVE UNITED

A single mother struggling to find affordable, quality child care in order to maintain employment and provide opportunities for her children.

A family coping with financial stress, a mental illness and a child with unmet dental needs.

A lonely senior citizen struggling to fix meals and maintain their home, striving to remain independent.

Within this report, you will find examples of the results driven by our impact agenda. Most importantly, you will be reminded that for every program, every new initiative and every dollar raised, individual lives have been changed forever.

We do it by mobilizing the community, forging partnerships, and building coalitions. We find solutions tailored to the challenges of our ever-changing world, at the individual, community, and systems levels.

Our solutions are based on local needs – ensuring they make a defining impact in homes, schools, and workplaces right here in Olmsted County. The evidence of our work is pervasive and is highlighted throughout this annual report.

This fight is joined by partners from every sector of our community. We foster relationships and build trust between companies, government agencies, nonprofits, and individuals to bring all voices and stakeholders to the conversation and to develop solutions together.

Our community will evolve – and United Way will continue to adapt alongside it – but no matter the time or place, people are being touched because communities are choosing to come together.

That's the power of community building. That's what it means to Live United. When you choose to get involved, to give back to the community through the United Way, you are impacting the entire spectrum of need, through a single act.

Each of these people, and the thousands more like them in our community, aspires to achieve their dreams, support their family, and live with dignity.

Over 90 years of local experience, in conjunction with the experiences of our national United Way network, teaches us that integrated, community-wide solutions offer the best chance of helping them succeed and make our community a stronger, healthier place for all.

That's why we join together to come alongside of individuals and families in need. Our community is stronger when we Live United. Together, we are fighting harder than ever to build stronger lives, stronger families, and a stronger community that allows everyone to reach their potential.

United Way goes beyond single-issue solutions and temporary fixes. Our community impact strategies are integrated and focus on ensuring children are prepared for school; youth develop skills and abilities they need to thrive in the job market; and people of all ages have an opportunity to improve their living conditions, economic status, and live a healthy life.



THE UNITED WAY



HISTORY

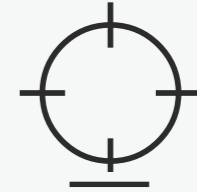
United Way of Olmsted County was established in 1925 as a community chest fund and has emerged over the past two decades as a community impact organization. The development of the community impact model is the product of a long history that has built upon nearly a century of work to help create a better, stronger, and more vibrant community in Olmsted County. Through its entire 90 year history, working together in support of people in need has been the central focus.



MISSION

Uniting people and resources to improve people's lives in our community.

There is boldness in all of us. And when we LIVE UNITED we can take on the critical problems in our community. In the right circumstances we can ignite that boldness to pull ourselves up and extend a hand to someone else. By providing people the tools to succeed, we can do more than help one person overcome the odds. Because BOLDLY we unite. UNITED we fight for individuals in need, and UNITED we win for ALL.



VISION

To be an agent of community change that inspires hope, creates opportunity, and champions people in need.

We win by living UNITED. By forging unlikely partnerships. By finding new solutions to old problems. By mobilizing the best resources. And by inspiring individuals to join the fight against our community's most daunting social crises. No matter the odds, we surround a problem, and we fight to win—with results to show for it. We have one life. To live better we must be BOLD, we must LIVE UNITED.

OUR YEAR IN REVIEW

A YEAR TO BE BOLD

As highlighted throughout this report, last year was another very active and productive year at United Way of Olmsted County. By connecting thousands of donors and volunteers throughout our community with strategies grounded in research, we have once again improved lives of people in need and helped make our community a better, healthier place.

All of us want to live in thriving communities with quality education, good health, and strong financial stability – where everyone reaches their potential.

Thank you for being a significant part of our community and for your contributions to United Way.



43,776

TOTAL NUMBER OF OLMSTED
COUNTY COMMUNITY
MEMBERS SERVED



15,649

CHILDREN AND
YOUTH SERVED

1,542 youth were served through our
partnership with Community Schools



12,372

PEOPLE WITH IMPROVED
HEALTH AND WELLNESS



28,402

PEOPLE WITH INCREASED
STABILITY (INCOME +
BASIC NEEDS)



UNITED WAY'S COMMUNITY IMPACT



KNOWLEDGE + SKILLS

When children and youth have strong, stable learning and growing environments, they can be more successful in achieving lifelong success and reaching their potential.



A HEALTHY LIFE

Without good, stable health, people struggle to provide adequate income and pursue education for reaching their potential.



A STRONG FOUNDATION

Living in a financially stable household is a major determining factor in the education and future success of children.

OUR UNITED WAY PARTNERSHIPS

HELPERS IN OUR
OWN COMMUNITY



WES BRANDENBURGER

HELPS TO ENSURE KNOWLEDGE + SKILLS

“We know a vital and productive society is built upon a foundation of healthy childhood development. The lifelong cost of childhood stress are enormous, leading to adverse impacts on learning, behavior, and health. Through our partnership with United Way, we are able to offer effective early childhood intervention and provide critical opportunities to prevent these undesirable outcomes and generate large benefits for all of society.”



CINDY NORGDARD

HELPS FIGHT FOR A HEALTHY LIFE

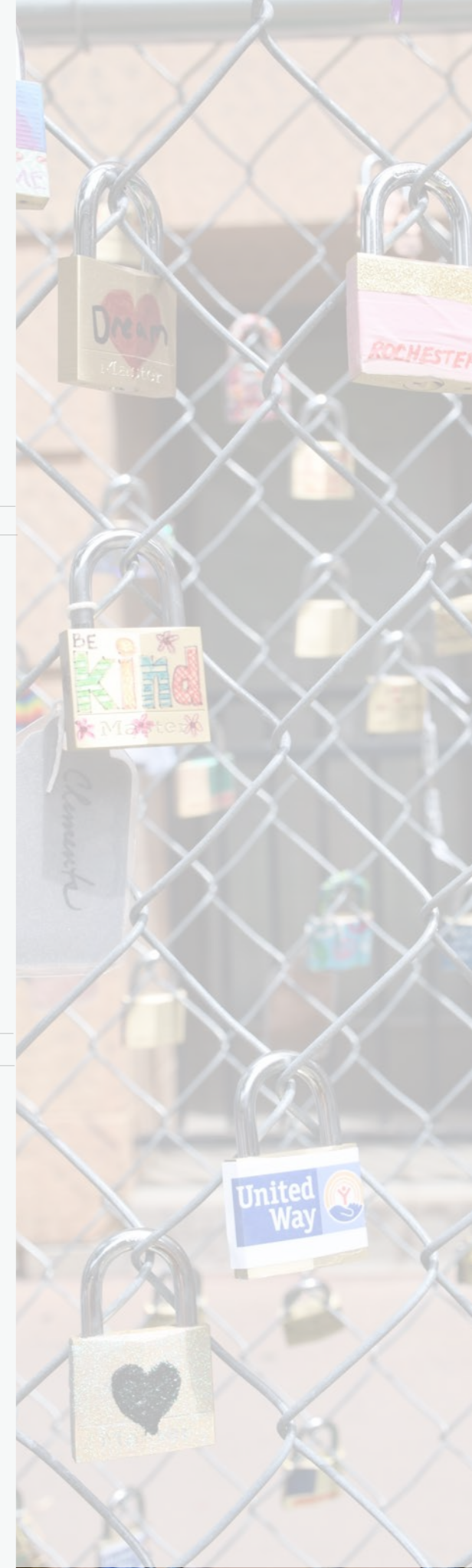
“We feel the success of our programs whenever we help bridge someone in need to resources that will help them become more successful. It is hard to be successful in other parts of your life if you do not have your health, if you are in pain or unable to afford medicine for your chronic conditions. Meeting these basic needs, while at the same time providing connections to ongoing insurance, prescription access, and other community resources is a core service in our Good Samaritan Health Clinics.”



ABDIRAHMAN HASSAN

HELPS TO BUILD A STRONG FOUNDATION

“United Way of Olmsted County plays an important role in supporting Three Rivers’ work in addressing barriers to homeownership faced by households throughout Olmsted County. Through United Way’s support, we are able to deliver local culturally-tailored financial coaching services that help first-time homebuyers successfully purchase affordable homes in the community. I am able to see the result of the hours spent to assist families achieve their goals in housing stability and succeed in reaching housing stability in their lives.”





ANGELA DALEY

HELPS TO ENSURE KNOWLEDGE + SKILLS

"I volunteer with United Way's My Free Taxes program, which helps low-income workers claim the refunds and credits they've earned. I find value in assisting families that may otherwise be missing an opportunity to increase their annual incomes. I also enjoy knowing that a portion of those monies returned gets spent in our local community. And what really excites me is when someone returns the following year and you can see improvement in their ability to file their returns; of course we are there to assist but what better way to witness empowerment!"



JUSTIN STOLL

HELPS FIGHT FOR A HEALTHY LIFE

"The Community School is a wraparound strategy that promotes student well-being by aligning the expertise and resources of Rochester's health community to support students in their physical, social and mental health needs. We take steps together towards collaborative leadership, with the establishment of formal committees and informal work groups (monthly partner lunches, health and social support committee, site community school leadership teams, etc.) and as a Community Schools Partnership Specialist, I help to manage communication, planning and continuous improvement across the partnership."



JULIA JOHNSON

HELPS TO BUILD A STRONG FOUNDATION

"When people in Olmsted County are unsure of which health or social service agency would help meet their needs, United Way 2-1-1 call specialists are there, 24/7/365 to help out. We can act as a link in accessing programs to meet basic needs, local government offices, disaster recovery services, financial help, domestic violence shelters, community centers, clinics, and so much more. Whether someone is trying to find out where to renew their driver's license, or struggling to pay rent, community members can depend on 2-1-1 call specialists, day or night, to help point them in the right direction."



OUR UNITED WAY PROGRAMS

**VITAL ASSETS
WITHIN OUR OWN
COMMUNITY**





KNOWLEDGE + SKILLS



COMMUNITY
SCHOOLS

EDUCATION UNLOCKS POTENTIAL. IN OLMSTED COUNTY, **84%** OF ALL STUDENTS GRADUATE ON TIME, BUT THE RATE DROPS TO **70%** FOR STUDENTS ON FREE OR REDUCED PRICE LUNCH PROGRAMS. RESEARCH INDICATES THAT STUDENTS SUCCEEDING IN SCHOOL GO ON TO HAVE MORE SUCCESSFUL OUTCOMES AS HIGH SCHOOL GRADUATES. STUDENTS WHO DROP OUT ARE **72%** MORE LIKELY TO BE UNEMPLOYED.

UNITED, WE'RE SUPPORTING QUALITY EARLY CHILDHOOD EDUCATION, AFTER-SCHOOL PROGRAMS, READING TUTORS, MENTORS, YOUTH DEVELOPMENT PROGRAMS, BOOKS FOR CHILDREN, SCHOOL SUPPLIES, AND MORE TO ENSURE FUTURE GENERATIONS ARE ON A PATH TOWARD SUCCESS.



WES BRANDENBURGER
GAGE EAST-SITE DIRECTOR

“Our successes are not always immediately noticeable, and they may seem insignificant, yet sometimes it’s the little things we do that have the biggest impact of all.”

A SNAPSHOT OF OUR WORK IN EDUCATION



813

Youth in Olmsted County are now building healthy relationship skills with help from youth after-school & summer programming and activities within programs like Girl Scouts ConnectZ and partners like Boys & Girls Club of Rochester.

635

Children in need are now achieving age-appropriate developmental milestones to help them become kindergarten ready through programs like Success by Six and the Tots Room at Gage East Apartments.

480

People in need are now completing financial literacy programs with help from partners like Catholic Charities and Three Rivers Community Action and through programs like Family Stabilizer and Refugee Resettlement.



A HEALTHY LIFE



10

HEALTH + WELLNESS

GOOD PHYSICAL, MENTAL, AND DENTAL HEALTH INCREASES QUALITY OF LIFE. 27% OF OLMSTED COUNTY RESIDENTS ARE CONSIDERED OBESE, AND PEOPLE WITH LOWER EDUCATION AND INCOME HAVE HIGHER RATES OF ORAL/DENTAL DISEASE. THE COMMUNITY NEEDS STRONGER MENTAL AND DENTAL HEALTH SYSTEMS FOR THOSE MOST VULNERABLE, AS WELL AS RESIDENTS WHO ARE UNDER-INSURED OR UNINSURED.

UNITED, WE'RE PROVIDING HEALTH AND DENTAL CARE TO PEOPLE WHO NEED IT MOST, PREVENTIVE DENTAL CARE EDUCATION, MENTAL HEALTH EDUCATION, AND MORE TO ENSURE THE MOST VULNERABLE IN OUR COMMUNITY ARE ABLE TO IMPROVE THEIR HEALTH.



CINDY NORGARD

DIRECTOR OF SOCIAL SERVICES - SALVATION ARMY

“Our partnership with United Way allows us to serve those most in need in Rochester and surrounding areas. No one person and no one agency can do all of the work that needs to be done by themselves. Strong partnerships allow us to build a stronger, healthier community which benefits us all.”

A SNAPSHOT OF OUR WORK IN HEALTH



331

People in need received early interventions for mental illness in community settings (behavioral and mental health care) with help from programs like Community Health Worker, and Senior Independence.

1,331

Children and youth in need received preventive dental care, including individualized case management, teeth cleaning, and x-rays from partners like Children’s Dental Health Services and programs like Community Health Worker.

4,250

Services were delivered to people in need of acute and chronic care or continuity of care from important programs like the Good Samaritan Health Clinic.



A STRONG FOUNDATION

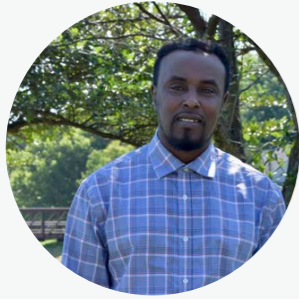


12

INCOME +
BASIC NEEDS

LIVING IN A FINANCIALLY STABLE HOUSEHOLD IS A MAJOR DETERMINING FACTOR IN THE EDUCATION AND FUTURE SUCCESS OF CHILDREN. UNITED WAY HELPS MEET THE BASIC NEEDS OF FOOD, SHELTER, AND SAFETY IN OLMSTED COUNTY. BOLDLY, WE'RE HELPING SENIORS REMAIN INDEPENDENT, PROVIDING CRISIS CHILDCARE, LEGAL SUPPORT, SAFE CHILD VISITATION, RENT ASSISTANCE, TRANSITIONAL HOUSING, FOOD AND MORE TO ENSURE BASIC NEEDS ARE BEING MET.

UNITED, WE'RE PROVIDING JOB TRAINING, FINANCIAL LITERACY COURSES, JOB COACHING, TAX FILING ASSISTANCE, AND MORE TO HELP PEOPLE IN OUR COMMUNITY BECOME MORE FINANCIALLY STABLE.



ABDIRAHMAN HASSAN
THREE RIVERS COMMUNITY
ACTION - EMERGING
MARKETS OFFICER

“I’ve learned a great deal about the needs of working families and how to lessen the barriers in achieving homeownership. I am so fortunate to work alongside with United Way and other agencies such as IMAA to further achieve and meet the needs of clients to reduce any additional barriers.”

**A
SNAPSHOT
OF OUR WORK
IN INCOME +
BASIC NEEDS**



3,085,739

Nutritious meals were delivered to people in need by programs like Meals on Wheels, meals served community-style by programs like Noon Meal, and food distributed through food shelves like Channel One.

261

People in need received immediate, short-term shelter with help from partners like Salvation Army and Lutheran Social Services and through their programs, LINK and Rent Assistance.

920

Seniors in need received case management support with help from partners like the Elder Network and Family Service Rochester, and through programs like Meals on Wheels and Senior Independence.



2017-2018 PROGRAM + PARTNERS

WE WIN BY LIVING UNITED.

By forging unlikely partnerships. By finding new solutions to old problems. By mobilizing the best resources. And by inspiring individuals to join the fight against our community's most daunting social crises.

Together, we involve experts and leaders, practitioners and people from all walks of life into the solution conversation. We're the stop-talking-start-doing-band-together-and-take-on-impossible-task-masters. No matter the odds, we surround a problem, and we fight to win—with results to show for it.

United Way engages a strategic and diverse network of community supports to help address the complex causes of poverty by creating long-lasting change in the interconnected areas of knowledge and skills, a healthy life and a strong foundation. These partnerships and the rest of United Way's work help change community conditions that challenge all lives, bring people together to create lasting solutions, and improve lives today for better communities tomorrow.

KNOWLEDGE + SKILLS

- Gage East Apartments:** Center City Housing Corporation
- Girl Scout Connectz:** Girl Scouts of MN WI River Valleys
- LEAD Mentorship:** Olmsted County
- Rochester Reading Champions:** Rochester Public Library
- Sports Mentorship Academy:** Sports U
- Success by Six:** Byron Community Education, Civic League Day Nursery, Families First of Minnesota-Head Start, Good News Children's Center, Tri-Valley Opportunity Council
- Teen Ascent:** Boys & Girls Club of Rochester, Quarry Hill Nature Center
- Youth After School & Summer Programming:** Boys & Girls Club of Rochester
- Y-Mentors:** Rochester Area Family YMCA

A HEALTHY LIFE

- Community Health Worker:** Intercultural Mutual Assistance Association
- Families Matter:** Family Service Rochester, NAMI Southeast Minnesota
- Good Samaritan Health Clinic:** The Salvation Army
- Happy Teeth:** Children's Dental Health Services
- Silver Creek Corner:** Center City Housing

A STRONG FOUNDATION - IN INCOME

- Achieve Homeownership:** Three Rivers Community Action
- Family Stabilizer:** Family Promise Rochester
- Financial Literacy:** Catholic Charities
- Pathways to College and Career:** Hawthorne Education Center
- Refugee Resettlement:** Catholic Charities
- Access Home:** The Salvation Army

A STRONG FOUNDATION - BASIC NEEDS

- Crisis Nursery:** Families First of Minnesota
- Family Access Center:** Family Service Rochester
- Food Shelf:** Channel One Regional Food Bank
- Living Independently with Knowledge (LINK):** Lutheran Social Service of Minnesota
- Legal Assistance:** Legal Assistance of Olmsted County
- Meals on Wheels:** Family Service Rochester
- Noon Meal:** The Salvation Army
- Rent Assistance:** The Salvation Army
- Senior Independence Collaborative:** Elder Network, Family Service Rochester, The Salvation Army
- Supported Employment:** Ability Building Center, PossAbilities





PAUL TIESKOETTER

2018 UNITED WAY CAMPAIGN CHAIR
REGION PRESIDENT SE MN, BREMER BANK

"Growing up in a rural community, our dinner table conversations included talk about helping others and being charitable by sharing what you can and because of this I grew up with a giving attitude."

"Since my first pledge 35 years ago, I have always participated in the workplace campaign. I feel United Way provides options to educate employees on ways to give back and services provided with the support of United Way."

"My family received a helping hand, it can happen to any family, at any time. And it can send your life in a different direction."

Now when making our annual community investment decisions, we use this simple guide -If not now, when? If not me, who?"

It all adds up when everyone does what they can, and it can really make a difference! "

-Paul Tieskoetter

OUR UNITED WAY STORY



DR. TERI RUMMANS

VICE CHAIR, MAYO CLINIC DEPT.
OF PSYCHIATRY AND PSYCHOLOGY

"I feel it's extremely important for those who have been given much to give back to those less fortunate. I have been blessed with so much in my life that giving to United Way and all they do is only a very small thing I can do in return."



CHAD ANDERSON, CPA

PARTNER AT RSM US LLP,
ROCHESTER MN

"Being a Leader in Giving is a way to support our community and those who can use a helping hand. RSM helps provide school supplies for Running Start for School."

I feel it is important to set a larger example by increasing our gift and being a role model for others."

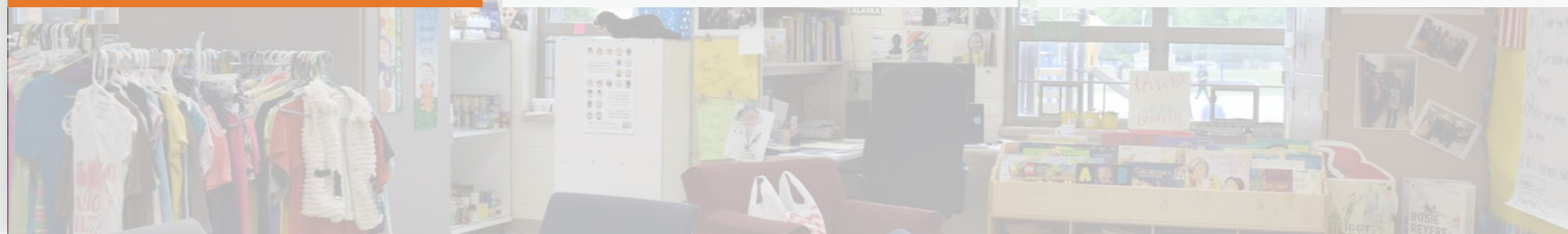


CARLA TENTIS

MAYO CLINIC DEPT. OF
DEVELOPMENT

"It was ingrained in me early on in my life that you should do what you can to help others."

During the Mayo Community Giving Campaign, every dollar counts and United Way does a good job of explaining where gifts are helping."



OUR UNITED WAY FINANCIALS

GROWING & CHANGING IN OUR OWN COMMUNITY

Revenue, expenses, assets, and liabilities for the year April 1, 2017 - March 31, 2018.
Visit www.uwolmsted.org/accountability to view the organizations full audit report.

United Way of Olmsted County unites people and resources to improve lives in the community with a focus on knowledge and skills, a healthy life, and a strong foundation - the building blocks for a good quality life.

Public Support	\$3,570,235
Donor Selected Designations	-\$636,595
Estimated Uncollectible	-\$143,995
Uncollected Pledge Adjustments	\$17,250
Programs & Grants	\$288,973
Building Rental	\$11,689
Administrative Fees	\$7,126
Investment Income	\$144,752
Contribution of Bequest & Trusts	\$65,000
TOTAL REVENUE	\$3,324,435

REVENUE

Grants & Program Services (Community Fund)	\$2,181,311
Donor Selected Designations	-\$636,595
United Way Programs	\$379,189
Community Impact	\$415,344
Development & Fundraising	\$464,138
Management & General	\$296,007
TOTAL EXPENSES	\$3,099,394

EXPENSE

CHANGE IN NET ASSETS **\$225,041**

CHANGE IN NET ASSET

ASSETS

Current Assets _____ \$4,842,480
Property & Equipment _____ \$570,323

TOTAL ASSETS \$5,412,803

LIABILITIES

Current Liabilities _____ \$1,103,367

TOTAL LIABILITY \$1,103,367

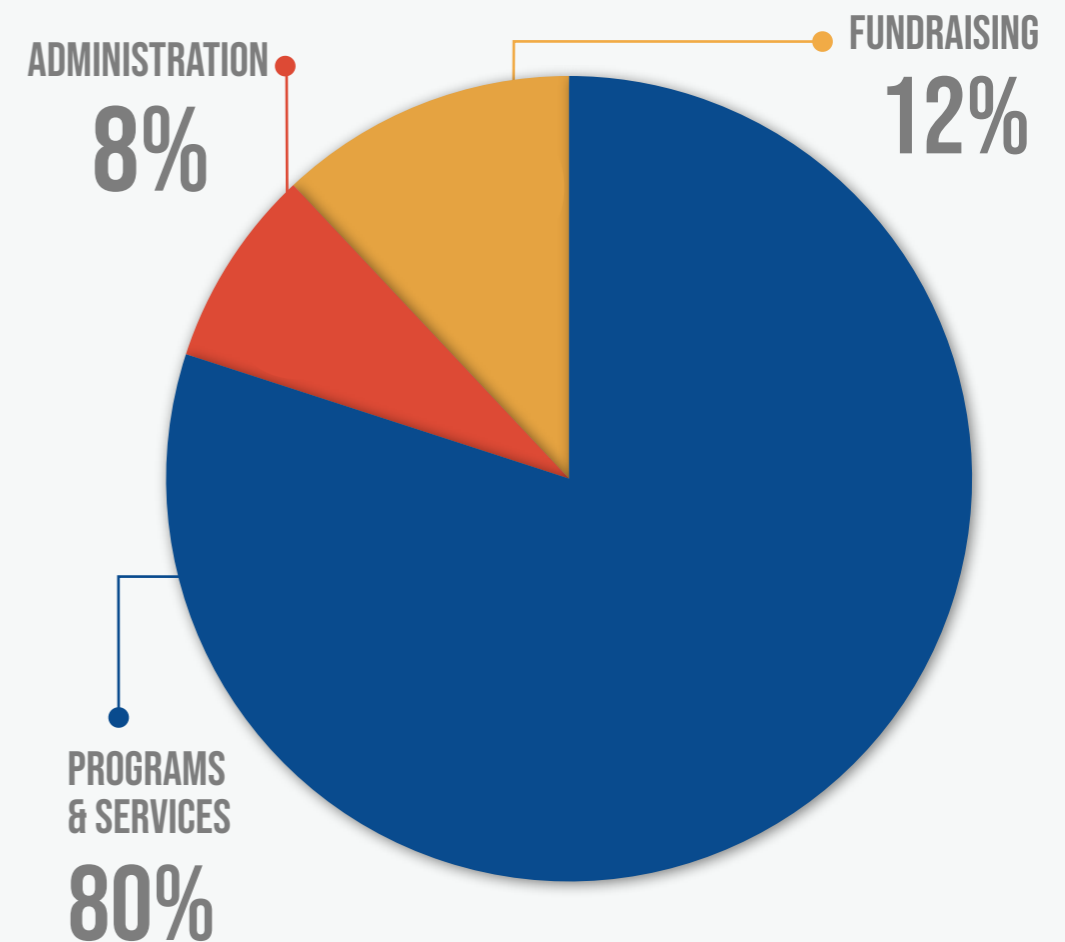
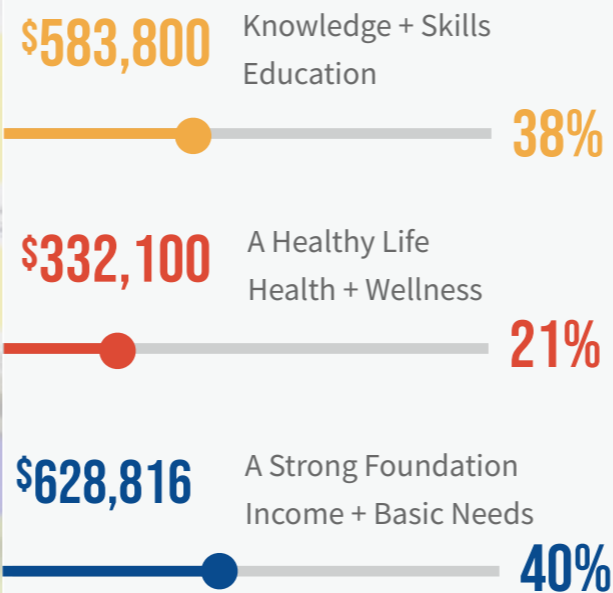
NET ASSETS

Unrestricted Net Assets
-Undesignated General _____ \$383,116
-Property Investment, net of related debt _____ \$558,476
-Board Designations _____ \$567,824
Temporarily Restricted _____ \$2,800,020

TOTAL NET ASSETS \$4,309,436

NET ASSETS + LIABILITIES

TOTAL NET ASSETS + LIABILITIES \$5,412,803





United Way of Olmsted County's Board of Directors and Staff are foremost a guardian of values on behalf of its stakeholders. The Board of Directors provide strategic leadership and vision through which the creation and implementation of strategic plans and policies are developed by staff.



18

BOARD OF DIRECTORS

Jerome Ferson

President UWOC

Tory Johnson

Board Chair

Walt Ling

Immediate Past Board Chair

David Oeth

Vice Chair

Jeffrey Hazard

Treasurer

Paul R. Tieskoetter

Campaign Chair

Chris Nelson

Past Campaign Chair

Shamila Amaarasekera

Josh Burgess

Emily Colbenson

Chad DeCook

John Eckerman

Sasha Gentling

Mark Hettinger

Melissa Johnson

Lindsey Lehman

Donna Lun

Sandra Means

Omar Nur

Angie Puffer

Jamie Rothe

Kim Sin

Diane Wottreng

STAFF

Jerome Ferson

President UWOC

Chad Campbell

Past Vice President of Community Impact

Jennifer Teske, CFRE

Vice President of Resource Development

Chelsey Mingone

Director of Communications and Events

Justin Stoll

Community School Partnership Specialist

Kelsey Zubke

Impact Analyst

Emily Johnston

Outreach Program Manager

Kris Brewer

Resource Development Operations Specialist

Lindsey Nelson

Campaign Specialist

Bonita Schultz, CFRE

Major Gifts and Planned Giving Director

Dale O'Groske

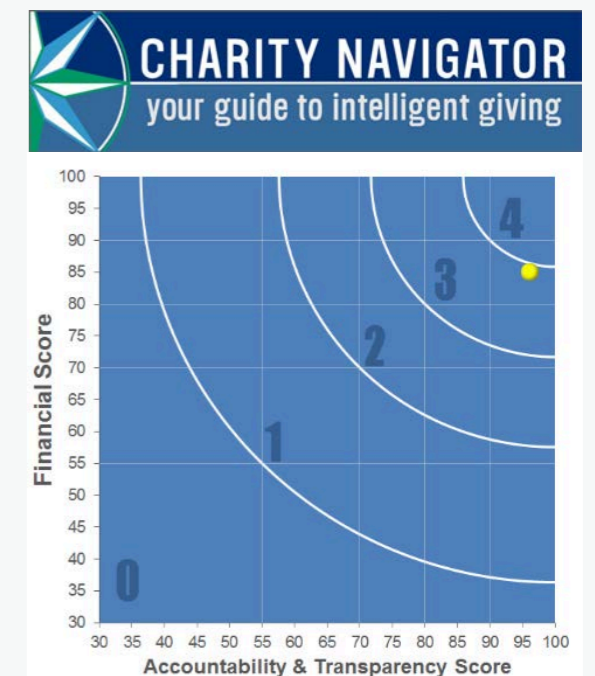
Chief Financial Officer

Thieulan Duncanson

Finance Assistant

Pam Wright

Executive Assistant



**GIVING WITH
CONFIDENCE**



United Way
2018 Membership
Requirements
Completed

With a commitment to transparency, accountability, and results, United Way of Olmsted County enables you to make a difference right where you live and see the difference you are making.

**CHARITIES REVIEW COUNCIL:
MEETS STANDARDS SEAL**



United Way of Olmsted County meets all 27 Accountability Standards of the Charities Review Council. National guidelines allow for up to 30 percent of donations to be spent on administrative costs. We spend approximately 20 percent.

WOMEN UNITED

THE CARING POWER OF WOMEN

Women United, unifies the collective caring power of women who are Leaders in Giving.

Women United is an affinity group of United Way. United Way of Olmsted County's Women United promotes support of signature issues impacting early childhood literacy and helping children & youth succeed in school.



Janice Aaker
Susan Ahlquist
Jennifer Albright
Amy Alexander
Brandee Anderson
Kristy Arndt Turner
Irina Bancos
Catherine Benson
Brenda Berg
Audrey Betcher
Christy Blade
Lori Blauwert
Patricia Bolger
Beth Borg
Sheri Brandvold
Kris Brewer
Melissa Brinkman
Toni Burns
Heidi Campbell
Elaine Case
Amy Clayton
Emily Colbenson
Lisa Colborn
Erin Collins
Lisett Comai-Legrand
Debra Cox
Angela Cramer
Michelle Daiss
Debra Donahue
Kathryn Doty
Jane Drennan
Sue Dripps
Holly Duck
Kika Dudiak

Sharon Dunemann
Beth Elliott
Julie Faust
Judy Felten
Sara Felts
Cathryn Fraser
Sharon Gabrielson
Lydia Gammell
Yolanda Garces
Wendy Gay
Ann Gerlach
Karthik Ghosh
Sue Greenberg
Cheryl Hadaway
Wanda Hagquist
Valerie Halling
Kimberly Hallum
Kathleen Harrington
Julie Hebert
Patricia Herman
Linda Hillenbrand
Rebecca Hinchley
Amy Hoerle
Ronaele Hoffman
Michele Hoover
Shirley Hultz
Betty Hutchins
Kari Jadin
Rachel Johnson
Julia Johnson
Barbara Jordan
Marlea Judd
Carmen Kane
Revelee Kaplan

Mary Kasten
Lori Keith
Denise Kelly
Kyle Klarich
Alison Knight
Sandra Kopp
Barbara Kriesel
Mary Kristo
Rosemary Kuzma
Debra Lafferty
Sharon Lager
Colleen Landherr Maddox
Martha Laskar-Aleman
Sandra Lee
Maureen Lemens
Susan Luebbe
Amy Mahon
Toni Mangskau
Linda Mansfield
Patricia McCleese
Kimberly McGarry
Laura Meiners
Kathleen Meyerle
Amanda Mikhail
Dawn Milliner
Robin Molella
Sally Morse
Kelly Murphy
Jean Murray
Karen Nath
Audrey Nelson
Julie Neumann
Keri Norman
Marcia O'Brien

Helen O'Connor
Gwen Oeth
Shelly O 'Groske
Mary Owen
Michelle Oyen
Melissa Payne
Patricia Pellikka
Sharon Peterson
Julie Postier
Rachel Pringnitz
Anne Pronschinske
Carmen Radecki Breitkopf
Susan Reinke-Walch
Jennifer Ridgeway
Marilyn Riley
Angela Roche
Gayle Rock
Jill Rock
Veronique Roger
Joan Rose
Joanne Rosener
Teresa Rummans
Paula Santrach
Gail Sauter
Krista Schubert
Bonita Schultz
Nina Schwenk
Wendy Shannon
Linda Shepherd
Julie Shirley
Carolyn Sogla
Melissa Sperber
Elizabeth Stewart
Andrea Swanson

Cynthia Sweeney
Laura Swenson
Sandra Taler
Carla Tentis
Jennifer Teske
Morgan Towell
Julie Trumble
Susan Underdahl
Danielle Vlazny
Rosalie Vondrashek
Mary Vorndran
Brenda Walsh
Jennifer Walter
Margaret Weglinski
Lilli Weivoda
Deborah West
Jennifer Jane Westendorf
Trisha White
Julie Williams
Megan Williams
Jaymi Wilson
Stephanie Witwer
Sandra Woolley
Diane Wottreng
Karen Ytterberg
Dee Dee Zwettler





LEADERS IN GIVING

20



ALEXIS DE TOCQUEVILLE

Mike & Mary Harper
Andrew Slain
Lois A Jorstad Trust
Vanda A. Lennon*
Mary Ellen & Mark Warner*

2 Anonymous

DIAMOND

Jeremy Fogelson & Megan Fogelson-Dahlby
Roland E. & Marilyn G Graves*
Bill & Julie Lower
Daniel & Carmen Breitkopf
Jennifer St Sauver & Mark Keegan
Dr. Ebbie Stewart & H. Paul Zellweger
Robert Stiles

EMERALD

Jesse & Kelly Arroyo*
Brad & Kristelle Behle*
Arthur Beyder
Keith Bible & Mary J. Kasten*
Jeffrey & Elizabeth Bolton*
Melissa Brinkman*
Jed Dart
Richard Ehman & Margaret Houston*
Beth Elliott & Steven Rose*
Bradley & Beverly Fawcett*
David & Carol Foley*
Morie & Marcia Gertz*
Rich & Sue Greenberg*
Thomas & Mary Hartman*
James & Kathryn Hoyer*

Andrea Jacobsen*
Mark & Kris Litzow*
Bob & Kathy Lohr*
Ron Menaker & Linda Mansfield*
Joseph Nelson
Robert & Rebecca Nesse*
Jon Olson
Deanna Pafundi
David & Sara Stenhaug*
David & Julie Warner*

PLATINUM

David & Susan Ahlquist*
Elizabeth J. Atkinson
Uldis & Lorena Bite*
Lori A Blauwet
Kerrie & Bob Bonacci
Jason & Kelly Boynton*
Elaine Case & Bill Wiktor*
Bill & Victoria Cliby
Larry Karnitz & Sara Felts
Jerome Ferson*
David & Anna Froehling
Donald & Sharon Gabrielson*
Dennis & Ann Gastineau*
Peter & Wendy Gay*
Donald R Halley*
James & Elizabeth Hannon
Mark & Michele Heminger*
Julie & Harry Hoffman*
Karen Hurtis*
Adam & Kelly Jacob
Dr. & Mrs. James W Jakub
Dave & Jan Jasperson*
Randolph Johnson*

Tory & Julia Johnson*
Barbara & William Jordan
David & Carole Joyce*
Drs. Barry & Beth Karon*
Tom & Denise Kelly*
Alison & Seth Knight
Philip & Amanda Kuper
David Langevin*
Matt & Laurel Light*
Dave & Cheryl Moertel*
Dr. Audrey M Nelson*
Jenny & Don Nosbisch
Lisa Drage & Eric Olson Family*
Mitch & Michelle Oyen
Michael & Dorine Ross
Teri Rummans
William & Anna Sanchez
Paula Santrach*
Forrest & Faye Sargent*
Tom & Kathy Scheid*
Craig Smoldt*
Rob & Cathy Stroebel*
Binnur & Timucin Taner
Lisa Kirkland & Warren Thompson*
Lorraine Uthke & David Distel*
Brian Van Abel
Danielle Vlazny
Rosalie Vondrashek*
Phil & Sue Wheeler*
Pat Whisnant*
John & Irene Wiltsie

3 Anonymous

* Recognizes United Way Loyal Contributors, giving to United Way for 10 years or more.



CARLA TENTIS

MAYO CLINIC DEPT. OF DEVELOPMENT
CAMPAIGN PRIORITY ADMINISTRATOR

“To me, Living United means being part of a community and giving back to those in need. I believe in contributing to both where I live and where I work.”



GOLD

Chad & Brandee Anderson*
 Antolak Family
 John Atkinson
 Marie-Christine Aubry MD
 David & Maureen Bahr*
 Mark E. Baker*
 Jon Bedsted*
 Jeff & Emily Bond*
 Mayor Ardell & Judy Brede*
 Jeffrey & Marie Brown*
 Zachary Buchan
 Michael & Sally Burns*
 Toni & Jeff Burns*
 Dennis Busche & Jane Brandhagen*
 Kurt & Jane Carlson*
 Paul & Bridget Carns
 Paul & Margaret Carpenter*
 Jesse & Veronica Cummins
 Jack Cusma & Dee Dee Zwettler*
 Paul & Jane Dahlen*
 Donald & Barbara DeCramer*
 John Duncan
 Nathan & Lan Duncanson
 Sharon & Wayne Dunemann*
 John & Karen Edmonds*
 Harper Family Foundation
 Russell Gelfman
 Kevin Glaser
 Gregory & Amy Gores
 Barbara Haner
 Jeffrey & Susan Hazard*
 Pamela Helgemoe

Marcus Hendrickson*
 Char & Norm Hepper*
 Mark Hettinger*
 Vincent & Michele Hoover*
 Bruce Horazdovsky
 Daniel & Georgia Hurley
 Linda & Frank Iossi*
 Sanjay & Manju Kalra
 Kirby Kough
 Karl & Susan Krecke
 Lou & Jeanne Kuhlmann*
 Edward & Linda Laskowski
 James Leary
 Carl & Evangeline Lundstrom*
 Michael & Amanda Mikhail
 Dawn Milliner*
 Mitchel R. Mindrum
 John & Susan Modry*
 John C. & V. Arlene Morris*
 Bob & Lynn Nelson*
 Randall Newman*
 Charlotte Nordrum*
 John & Pat Noseworthy*
 James & Marcia O'Brien*
 Brian & Gayle O'Neill
 Mary & Jeff Owen*
 Darrell & Elaine Pardi
 Larry & Gail Pease
 Bret & Karen Petersen*
 Mark & Ivy Pillers*
 Henry Pitot & Kika Dudiak*
 Rachel Pringnitz
 Jane & Herbert Reiman*
 Jarrett & Linda Richardson*

Stephen J & Marilyn T. Riederer*
 Gayle & Doug Rock
 Brent Roller
 Stephen & Janey Russell
 Charlotte H Rydberg
 Jay H. Ryu & Patricia A. Pellikka*
 Darrell & Margo Sandeen
 John & Susan Schaffner*
 JoAnn Scherger*
 Kenley & Susan Schmidt*
 Michelle Schmitt
 Mike & Sandy Silber*
 David & Donna Sippel*
 Hugh & Aynsley Smith
 Melanie Swift, MD
 Jeffrey & Pamela Thompson*
 Bryan & Maureen Tousley*
 Todd & Kerry Truax
 Bill Volkmar & Sheri Brandvold*
 John & Barbara Volz
 Jim & Lee Wacholz*
 James Walch & Sue Reinke Walch*
 Dean & Teresa Waldof*
 Randall & Patricia Walker
 Dennis & Lilli Weivoda*
 Tom & Ellen Wente*
 Drs. Constance Williams & J
 Michael Bostwick*
 Megan & Jeremy Williams*
 John & Gretchen Winter*

2 Anonymous

LEADERS IN GIVING

SILVER

William & Caroline Adamson*
Dave & Barb Agerter
Robert & Elizabeth Ahern
Allen Aksamit Jr MD
Rob & Heidi Alberts*
Julie & Patrick Aldrich
Glenn & Christine Alexander
Timothy & Rodica Alexander
Anthony Alford
Jeff Allen
Barm & Karen Alsbrook
Peter Amadio
Ann & Clark Anderson*
Francesca Anderson
Michael Anderson
Paul & Sue Anderson*
Marjorie & Scott Anfinson
Bill & Jodi Armstrong
Aneel Ashrani & Deepika Bhargava
Dr. Raymond & Judy Auger*
Chris Austin
Cindy Bahler
Darin & Lauren Baker
John & Tamsin Barlow
Anne & Mark Baron*

Kathy & Paul Bartemes
Carol Berteotti & Dave Beal
John Beck*
Scott & Andrea Beck*
Pamela Becker
Debbie Bennes
Keith & Johanna Berge
Dan & Sandy Berndt*
Matt Bernstein & Rhoda Lichy*
Audrey Betcher*
Dr. Allen & Gail Bishop*
Chris Blade
Robert Bleimeyer
Linda Bly
Jennifer M. Boland
Tisha Bolger*
Donald & Pat Borcharding*
Jennifer & Colin Boysen*
Ronald Brackey
Richard Bram
Steven & Megan Branda
Michael Branson*
Drs. Laura Breeher & Kent Carlson
Robert Bromley
Robert D. & Julie K Brown*
David & Melissa Brudwick*
Charles & Pamela Brust*
Ron & Sarah Buzard*
Terry & Kathleen Buzzell*
Chad & Jennifer Campbell
J. Keith Campbell M.D.*
Janet Carlson
Patricia Carlson
Kim Carpenter-Hakes & Gail Hakes
Roberto Cattaneo & Iris Kemler Cattaneo

Ed and Jenny Chestolowski*
Keith J. Christensen & Dawn Deines-Christensen
Grant & Mary Christiansen*
Mark Christopherson MD*
Jeremy Clain & Andrea Kattah
Michael & Meredith Clark
Elizabeth Clayton
Dr. & Mrs. Charles Coddington III
Clifton & Lisa Colborn*
Christopher & Suzanne Colby*
Jeff Coleman
Neil Columbus
Kevin & Melissa Connor
Steven & Laurie Cook*
Paula Craigo & John Lieske
Sarah Crane
Dan & Susan Crowell*
Don & Peggy Dalland*
Gene & Sandy Dankbar*
Justin Davis
Amy Degnim
Leslie Demmer
Robert & Ilse Diasio
Eugene & Joanne DiMagno*
Kris Djupedal*
Mary & Jeffrey Dobbins
Robert Douty
John & Faye Doyle*
Holly Duck
Monika Duitch
Livius & Margaret d'Uscio
Charyl Dutton Gibbs
Jeffrey Ehrhart & Marion Pitts*
Phillip & Susan Einspahr*

Sally Enders
Tony & Terri Enquist*
Steven & Darcy Erickson
Dr. Raul & Joan Espinosa
Dr. Titus Evans Jr*
Lori Ewoldt
Susan & Edward Prosser*
Mark Federspiel & Linda Gregory
Hilla Ferguson & David Dwyer
Conrad Fingerson
Eva Fjerstad
Bethanie Flattum
Bob & Cynthia Fleming*
Lynn M. Flickinger & Stephan R. Hanna*
Robert Foote
Janelle M Fox*
Jim & Wendy Francis
Thomas Freeman & Alan Skogerbo*
Lydia Gammell
G. Richard & Pat Geier
Amit & Karthik Ghosh
Jerianne Gonser
Jonathan Good
Paul & Terry Gorman*
John & Jacquelyn Gosse*
Matthew Graham
Thomas Grandouiller
Jenna Granle
Karen & Fred Graszer*
Joyce Greer*
Deb Groehler
Aaron & Deborah Gross
Bryan Groves
Bruce & Doreen Gudlin*
Jeanne Guyse*



Cheryl J & Marc A Hadaway*
Kimberly Hallum*
Chad and Sara Hanson
Liz Hauger*
Lee & Dottie Hecht*
Scott & Pat Heck*
Corey & Lisa Heimer
Paul & Heidi Heimgartner
David A & Nancy M Heinz
Tom & Lou Ann Hellmich
John & Laurie Helmers*
Troy & Jane Herman
Jerry Hermann
Chad & Shauna Hirsch*
Steve & Ellie Hodgson*
Dan & Ronaele Hoffman*
Kimberly Hogstad
George & Sandra Hohberger*
Christopher Hostak
John & Gloria Hostak
Deven Hui
Shirley Hultz*
Charity Hunt
Katie Jones
Betty A Hutchins*
John Huxsahl & Cindie Severson-Huxsahl*
Gary Ingalls
Doug & Dawn Inman
David & Carrie Inwards*
James & Norma Isaacson*
Debby & Jim Jacobsen*
Tom & Kristie Jacobson*
Kari & Jason Jadin*
Mircea Jerghiuta

Jane Jirele Blaine & Tom Blaine
Amy & Rick Johnson*
Leigh J. & Judy Johnson*
Robert & Janet Johnson
Dwight & Kathy Jones
Jacque Jones
Dr. & Mrs. Frank A. Jost III*
John & Joan Joyce*
Marlea & Joe Judd*
Michael & Brenda Kalmbach
Edward Kamin
Brad Karon & Valeria Cristiani
Lori Keith*
Gary & Kathy Kerska*
John Knudsen & Brian Austin
Jeffrey Koga
Laura Kotten
Eric & Francine Kovash
Jason & Anna Krueger*
Mark & Dawn Krupski*
Kirsten & Al Kuehl*
Rosemary A. Kuzma*
Robert & Charlene Kyle*
Kathryn Mallwitz*
Trudi Lane
Eric & Jane Lantz*
Daniel & Donna Larsen
Julie & Jeffrey Larson Keller
Marty Aleman*
Donald & Phyllis Layton*
Gregory & Donna Layton*
Sandra D. Lee, BSN, RN
Raymond Legrand & Lisett Comai-Legrand*
Drs. Brad & Jean Lewis*
Tina Liebling & Mark Liebow*
Chad & Lavonne Liedl

Judy & Rick Lien*
Walt & Darcy Ling*
Scott & Jolene Litin*
Christine Lohse & Scott Przybelski
Lori Lonergan Brennan
Cheryl Lovlien
Todd & Lorie Luedke
Diane Mack
Timothy Mackey*
Colleen & Dan Maddox*
Leo & Katie Maguire
Megan & Mike Malugani
Jacob Malwitz & Chad Weaver
Mary Marnach
William & Margaret Marshall*
Peg & Ross Mattke*
Pamela J McCabe*
Dr. Cynthia McCollough
Edward & Raeann McLeod
Ursala McNeal
Jim McReynolds
Mike & Laura Meiners
Kerry & Cresta Melcher*
Joseph Messick*
Kathleen Meyerle & James Marttila*
Cecelia Meyers*
Robert & Ruth Miles
Barb & Ed Miller*
Dr. Fletcher & Deborah Miller
Gary & Joyce Miller*
Wayne & Cate Miller Family*
Lance Milner
Mark Mitchell
Louise Moe*
Melissa Moe
Ancy & Bob Morse*

Margaret Moutvic
David Mueller*
Sharon Mueller
Lisa Muller
Constance & Lonnie Mullins*
Kelly J. Murphy*
David Murray
Jean Murray & George Huston*
Tony Narr
Wayne & Renee Nation*
Brad Nelson
Dave & Jolene Nelson*
Denise & Jarred Nesbitt
Julie Neumann
Minh-Doan Nguyen
William & Sharon Nichols*
Jack & Cheryl Nimtze*
Bruce Nix
Dale Nordquist*
Keri & Mark Norman*
Helen M. O'Connor
Karl & Theresa Oestreich*
David & Gwen Oeth*
Dale & Shelly O'Groske*
Kerry Olsen
Diane O'Mara*
Christopher Orłowski
Sandy Ortiz
Lance & Karen Oyen
Doug & Barbara Pappin*
Dan & Terri Penz*
Sharon K Peterson*
Timothy & Paula Plummer*
Jerry E. Pott & Maureen H. O'Brien-Pott*
Anne Pronschinske
Angela Puffer



Lynn Rasmusson*
 Basem Ratrout
 Matt & Melissa Raveling
 Kimiyo Raymond
 Nicholas & Kate Remmes
 Kristine A. Riess
 Marilyn Riley*
 Roger & Denise Ring*
 Angela Roche
 Jill Eggerichs
 Bruce & Nancy Rohde*
 Phillip & Kathryn Rossman
 Alyson Roth
 James D. Ryan*
 Salma Safiedine & Dr. Mohamad Bydon
 Eric & Linda Sanders
 Gail M Sauter*
 Steven E. & Tami R. Sawyer
 Al & Julie Schafer*
 Kristin Scherber
 Barbara Schmerbauch
 Bradley & Mary Schmidt
 Eileen Schneider
 Jay Schneider
 Christopher & Diane Schoenherr
 Michael Schoenoff
 Mark Schroeder
 Jeremy & Krista Schubert*
 Bonita & Russell Schultz*
 Lori & Ed Schultz*
 Gary & Rebecca Schwartz*
 Dr. Kenneth & Margaret Scott
 James Severin*
 Kirk Severson
 James & Judy Seward*



Larry & Dr. Wendy Shannon*
 William & Heidi Shaughnessy
 Patrick & Karen Sheedy*
 Linda Shepherd*
 Phil & Carolyn Sheridan*
 Lynne Shuster*
 Kurt & Joan Simon
 Stephanie Slack
 James & Judith Sloan*
 Judy & Jim Sloan Foundation
 Cory Smith
 Nicole Smith
 Shane Smith
 Thomas & Jeanne Smith*
 Karenjoy Spaeth
 Michael Sparks
 Carol & Steve Sparrow
 Melissa & Ray Sperber*
 Nathan Staff
 Randy & Nancy Stevens
 David & Kathy Stien
 Emanuel & Marie-Antoinette Strehler
 Peter & Karen Streit*
 Strissel Family
 Don & Stephanie Supalla*
 Kenneth Swanson
 Harry & Delores Swedlund*
 Cynthia Sweeney
 Keith & Laura Swenson*
 Glenn & Pat Tabor
 James & Patricia Talen*
 Sandra Taler & Andrew Westreich*
 Jay & Sarah Talwalkar
 Angelina Tan
 Christina Tatting*
 Stephen Thibodeau
 Charles C & Marguerite H Tice Family

Julie Trumble
 Timothy & Kathryn Tucker*
 Mike & Katie Vance
 Pete Vedell
 Kristin Volbrecht
 Carl & Phyllis Von Wald
 The Wald family
 Jennifer Walter
 Daryl Walters
 Michael Walters
 Kimberly Askew Wanek & Matt Wanek*
 Marge Ward
 Jerry & Sherrie Watson*
 Denise Wedel
 Margaret Weglinski*
 Joe & Dar Weis*
 James & Ruth Weispfenning
 Gordon & Carla Weller*
 Mary Wellik*
 Tony & Carol Wells*
 Randy & Linda Wendt*
 Dana & Sue Whaley
 Cynthia & Steven Wiese*
 Julie Anne Williams*
 Michelle Williams
 Jaymi Wilson*
 Ben Wiltsie
 Bruce Winter
 Charles Withers*
 Bob & Debbie Witte
 Benjamin & Christine Wolf
 Peter & Diane Wottreng*
 Ron & Judy Yaggy*
 Timothy Yoder
 Karen & Steven Ytterberg*
 Michael & Barbara Zinser*

29 Anonymous





BRONZE

Alan & Nadine Anderson*
Mark & Marie Anderson
Thomas & Kimberly Aronhalt
Lisa A Beck
Haraldur Bjarnason & Katrin
Frimannsdottir
Christine Boos
Kris Brewer*
Dwight Brown
Gena & Pat Cahill*
Heidi Campbell*
Lori Casey
Greg & Amy Caucutt*
Brian, Kathy, Olivia & Anna Cook*
Tim & Karen Daly*
AJ Daniels
Virginia Darling
Marnie Meylor
Richard Dean*
Sharon Deml*
Vincent Donahoe II
Debra Donahue*
Sherilyn Driscoll
Karen Evans
Judy Felten*
Scott & Darci Fenske*
David Field
Patrick & Karen Finneman Killinger
Pam & Al Fisher
Nina Garces & Joe Gliniecki
Kara Gibson
Pete Giesen*

Les & Dee Gill
James & Donna Glaser*
Hough Family
Wanda Hagquist*
Tom Hartman
Robert Hedman*
Donald Hensrud & Natasha Matt-Hensrud
Jim & Pat Heydon*
Linda & Doug Hillenbrand*
Gregory Hird*
Amy Hoerle*
Steven Hoerle*
Teresa G. Hyle
Cary & Kathy Johnson*
Marcia Johnson
Verlyn Johnson
Bill Kalmes*
Carmen & Tom Kane*
Kejal Kantarci & Orhun Kantarci
Mark & Kyle Klarich*
Travis Klassen
Brenda Kochevar
Roger & Sharyn Krsnak*
Jake & Jennifer Kugel
Deb Lafferty*
Sharon Lager*
Arie & Suzanne Lagerwaard*
Tricia Lanzel
Bethany Larson
Sara Lassila
Leslie & Robert Litwiller*
Cristi Lyke
Amy & Dave Mahon
Toni Kay Mangskau

David & Michaun Marcoux*
Robert & Julie Maroo*
Leonard Matoush
Curtis & Mary Meier*
Jason & ReNee Miller
Jennifer Miller*
Bernward Goettke & Robin Molella*
Ryan & Megan Moore
Ray & Sally Morse*
Presh Niemi
Reed Nordyke
Steven Norgaard
Megan M. O'Byrne
Eric & Aba Ofori-Atta
Anneliese Opitz*
Mark & Jeri Ostrem*
Tamra Parsons
John & Roxanne Pederson*
Ken & Rosemary Persons*
Dawn Rainey*
Craig & Brenda Reichel*
Jim Renn
Chad & Jennifer Ridgeway
Dr. Daniel Rohe*
Walt & Sarah Rothwell*
Lynne Ryan*
Dan & Lynn Schmitz
Jennifer & Robert Schubert
Troy Schuler
Mary Seeger*
Andrew & Jennifer Shulha
Carolyn Sogla*
Michael Soper
Patrick Spinler

Steven Stenhaus*
Jim & Kathy Stickney
Patty Stricke*
John & Andrea Swanson
Jennifer Teske
Pamela & Michael Thieke*
Deanna R Thompson
Hadley Thompson*
Paul & Barb Tieskoetter*
Cory Tomlinson
Jonathan & Tricia Torrens-Burton
Stephen & Keri Trenkner
Carolyn Rohrer Vitek
Randall Vrabel*
Heather Wengert
Deborah West*
Jennifer Westendorf
Trisha White*
Kevin Whitford
Sandra Woolley*
Pamela Wright*

4 Anonymous

BUILDER

Janice Aaker*
Lianne Adamson-Riebow
Yusuf Adde
Alberts Family
Jennifer Albright*
Amy E Alexander
Eric Alleckson
Michael Allgood

William Alward
Jennifer L. Anderson
Stephanie Anderson
Grace N Angelondous
Megan Antinozzi
Mark R. & Kristy Arndt Turner
Jim & Caroline Arpin
Kathleen Asay
Darryl Ash*
Jonathan Atkinson
Michael Attewell
Debra Attinella
Crystal Bain
Isaac Baker
Jessica Chavey
Kirk P. Balderes
Alan & Amy Baltzer
Irina Bancos
Mark & Janet Barebo
Jordan Barnes
Sara Barnes
Chad Barnett
Mary Bartholet
Donna Bauer
Kim Baumgartner*
Bill & Edwina Bean
Amy Becker
Susan Bee
Janet Befort
Robert & Deborah Bendzick*
Lisa Bennett
Catherine A Benson*
Angela Beres
Tim & Brenda Berg*
Jolene Berg
Donna Berktold

Daniel Bidinger*
Charles S Bierman
Matthew Binnicker
Bruce & Jen Bjorgum
Michael Blake
Charlene Blanchard*
Joseph Bly
Goodner Family
Edwin Bona
Beth Borg*
Erv Borgen
Rosanne M. Boser
Lee & Linda Both
Jon Bowman
Scott J. & Lisa J. Boyum
Richard Breen
Merri Bremer*
Kim Bremseth
RoxAnne Brennan
Christopher & Stacey Brent
Nicole Breuer-Brueck
Vince & Jennifer Brickley
Brent & Summer Brockman
Douglas & Tina Brown
Richard & Nancy Brubaker*
Joan Bryant-Mandler & David Mandle
Daniel Buchanan*
John & Suzanne Bundrick
Laura Burmeister
Jan & Bruce Burnes
Malinda Butz
Shelly Caldwell
Nicole Callahan
Barry Camerer*
Gary Campbell*
Nathan Campbell

Marylee Champion
Sara Carlson
Haddon & Damita Carryer*
James Cerhan
Robert & Carol Chase
Dina Chhel
Daniel & Sinéad Chick
Linda L. Chlan
Chunhee Richard & Kyung Mi Choo
Patricia Christofferson
Jodi & Dylan Christopherson
Kathryn Cieslak
Rita Clark*
Brandon Clig
Karen Cocker*
Renee Cocker
Erin Collins
Patricia Contag
Linda Cooper
Karl & Mia Corrigan
Debra L Cox
Angela & Carl Cramer*
Ms Kimberly Kramer
Julie Cunningham*
Michael Curler
Michelle Daiss*
Barbara Dallavalle
Elizabeth Davidson
John & Shannon Davies
Aaron & Amanda Davis family
Amy & Christopher Davis
Michael Davis
Heidi Deno
Brian DeSouza
Molly Destro Borgen
John & Lori Deutschman
Brooke Dickie
Paula Dickinson*





Lisa Dierks
 Kris Dietz
 Mike & Kris Dietz
 David Dines*
 Ann Discher
 Art & Nancy Disque*
 Travis Dockter
 Jeff Doherty*
 Craig & Judy Dokken
 B Donelan-Dunlap & J Dunlap
 Darla Doocy
 Ryan Dorenkemper
 Kathy Doty*
 Jane Drennan*
 Joseph & Lindsay Duda*
 Barry Duffey
 Lori Duresko



Julie Eastling
 Jon & Dawn Eckhoff*
 Bruce Eckloff
 Shirley Edmonson*
 Norman Egger
 Jason S. Egginton, MPH
 Carolyn Eichenlaub
 Marla Einck*
 Sharon Elcombe*
 Jeffrey Ellerbusch*
 Byron Ellingson
 Julie Emerson
 Gregory W. Epsom & Dr. Kristin L.
 Garlanger
 Emma Erickson
 Fredric Espe
 Steven Evans
 Faiman Family
 Adam Falk
 Carol Fallon*
 Stacy Farlinger
 Julie Faust
 Jeremy Felder
 Joel Felmlee PhD
 Jeramy Fischer
 Carol J Fitzgerald*
 Gayle Flo
 Harvey & Rita Flowers
 Amanda Fogarty
 Sandra Houle & Bruce Fossum
 Marty and Marissa Frana
 Cathy Fraser
 Richard Freese
 Casey & Dana Funk*
 Tony & Brenda Fyles*
 Chris & Marne Gade*
 David Gaio

Dr. Ognjen Gajic & Vladana Gajic-Zoric
 Terri Gardner*
 Jennifer Garness*
 Elaine & Jerome Garry
 David Gathje
 Melinda Gelfman
 Ann M Gerlach
 David Geschwind*
 Deborah Gibson
 Jeanne Gibson
 Bradley Giere
 Eyob Girma
 Donald & Stephanie Glascock
 Catherine Glidden
 Shelly Glover
 Linda Godsill
 Sandra & David Goslee*
 Travis & Jaime Gransee
 Paula Graskamp
 Julie Graves
 Stella Greeley
 Casey Green
 Terry Greenwaldt
 Terry & Lisa Grendahl
 Jared Groehler*
 Paul Groehler
 Robert & Ann Groover*
 Grace Groski
 John Gunnon*
 Paula Gyura
 Leslie Haack
 Thomas & Mary Jo Habermann
 Katrina Hacker
 Deb Hagen-Moe
 Jennifer Halbert
 Marsha Hall
 Valerie Halling

Denise Hamilton
 Pamela Hammond*
 Ron Hankey
 Darrel & Pat Hanks
 David Hansen
 Julie & Steve Hansen*
 Christian Hanson
 Eric & Theresa Hanson
 Kaloa & Walter Hanson*
 Michele & Gregory Hanson
 Stephanie Hanson
 Mark Hardesty
 Warren T. Harmon*
 Mike Harris
 Hal & Patricia Harris
 Helen Hart
 Debra Hays
 Joanne & R. Arlen Heathman
 Julie Hebert
 Lois Heeringa*
 Peter L. Heldt
 Hal & Holly Henderson
 Julie Henry
 Jeff & Shelley Henry
 M. Herman
 Patricia & Dale Herman*
 Becky & David Hinchley*
 Richard & Amber Hinds
 Brendann Hines
 Robert Ho
 Heather Hockert
 Bryan Hoerl*
 Peter Hogan
 Kari Hohn
 Barbara Hollar*
 Amanda Holloway
 Natalie Holst*

Tyler Huerter
Marlina Hui*
Christine Hunter
Mark & Renata Iverson
Paula Iverson
Kindra Jankowski
Thomas Jaskulka
Dragan Jevremovic
Bruce Johnson*
Kenneth Johnson
LeAnn Johnson
Leroy Johnson
Dave & Maren Johnson
Rebecca Lee Johnson, MD
David Jones
Nathan and Kelly Jones
James Jorgenson
Anthony Joseph & Wendy Wolfram-Joseph
David Kaktis
Janine R. A. Kamath
Joseph Kane
Timothy Kanne
Revelee Kaplan
Greg & Sue Kapraun*
Tammy Karp
Ronald Karwoski*
David & Elizabeth Katzelnick
Gary Keeney
Sandra Kelley
Laurel J Kelly
Susan Kennedy
Christopher Killian
Teresa & Richard Kimlinger*
Angela Kinneberg
John Kisiel & Lily Wong-Kisiel



Robin R. Klebig
Bryan Klimek
Aimee Kline
Steve Kluck*
Richard Klun
Mary Knetter
Deborah & David Knopman
Steve & Terri Knudson*
Matthew & Mamisoa Knutson
Mark Koch
Scott Koepsell
Christopher Kohler
Karen Koka
Amy Kolbe
Sandra Kopp
Philip Krautkremer*
Carrie Krieger
Roy & Barb Kriesel*
Mary Kristo*
Jean Lacey
Martha Lacy
Giuseppe & Desiree Lanzino
Dorothy Larsen
Laurie Ivins Leaf*
Dennis & Sandy Leavelle
Jonathan Lee
Matthew Lee*
Amy Leeser
Shawn Lehman
B. Leibovich
Janet Leisen
Maureen Lemens*
Kevin Lenz
Dawn Leonhardt*
Connie Lesnick
Sara Lewer
Terri Lewis*

Ann Liebenow*
Michelle & Tim Liepold Sr*
Roger Lindahl
Karen Lockington
Edward & Beth Loftus
Erin and Scott Logan
Amy Long
Shawn Losee*
Donald Loude
Francie Lovejoy
Lynn Loynes*
David Ludowese
Connie & Scott Luedtke
Albert & Donna Lun
Dr. Bruce & Sue Lund*
Anthony Lyke
Keith Lyke
Susan Lyman
Slobodan Macura
Michele Manthey Saack
Julie Manville-Camp
Jim & Cindy Martenson*
Jesse Martin
Joseph Mauss
Peter Maves
Amy Mayer*
David Mc Fadden
Patrick McCabe
Donald McCartney Jr.
Barb and Thomas McClure*
Heather Mc Cormack*
Kenneth McDonald
Sean McEligot & Julia Gerak McEligot*
Kim McGarry*
Corey & Liz McGlone
Matthew & Angela McKay*
Andrew McKeon





Mark McNiven
David Mead
Jeffrey Meaden
Dean Meeusen
Douglas & Mary Meine*
Jane Meineke
Thomas Meloy
Bruce & Pam Mensink*
Judi & Dan Mersel*
Michelle Mielke
Matthew Mikkalson
Jamie Miller
Terry & Nancy Miller
Wesley Mills
Steve & Grace Moen
Cynthia Molko
Beth Moran*
Jody Morbeck
Michael & Denice Morehead*
Kristin Morgan
Mark Morrey
Craig Mullins
Marie Mynderse
Karl & Karen Nath
Deborah Neary
Christopher D Nelson*
Janell Nelson
Teresa Nepstad
Kerry Harmon-Ney*
Matt & Patti Nigbur
Bernard & Julie Nigon*
Todd & Diane Nippoldt*
Joe Nix
Karen O'Callaghan
Erin O'Brien
Tracy & John O'Brien
Stephen & Marsha O'Connor

Jae K. & Terry H. Oh*
John C. O'Horo
Shannon Olander
Dr. Mark & Maria Olsen
Crystal Olson
Hawo Omar
Barb Orlowski*
Kim Otte
Denny Padgett
Theresa Parker
Sandra Passe
Donavon Paulson
Melissa Payne
Stephen Paynic
Ellen Pearson
Prema Peethambaram
Scott Peloquin
John & Pat Perkins*
Steve G. Peters MD
Jane Peterson
Jennifer Peterson
Tanya Petterson
Robert Pfeffer
Harriet Catherine Phillips
Nancy Pick
David & Jane Piepgras
Karlyn Pierson
Steve Pleschourt*
Craig Popenhagen
Devon Post
On behalf of Karen Preston*
Mike D. Price*
Tammy Price-Troska
Julie Prigge
Bobbi Pritt
Eric Prochnow
Erik & Andrea Propotnik

David Quam
Patrick Quinn
Chad Rafdal
Kindra Ramaker
Laureano Rangel
Russell & Carolyn Real*
Colton Reddel
Don & Gay Reed*
Guy S Reeder
Julie Reeve-Martin
Laura Regner
Bruce & Luann Remme*
Sabrena & John Resman
Danielle Peabody Reuss
Mark & Coleen Rieder*
Suzanne Riley*
Jose L Rivas*
Robert Rizza
Heidi Roberson
Kirk & Lisa Rodysill*
John & Martha Roemer*
Veronique Roger
James & Anita Rogers*
Jim and Patti Rogers
Wilfredo Roman Catala
George Romano
Shirley Roque
Joan & Marvin Rose*
Kristine Rossman*
MaryEllen Roubik
Marisa Rueda Will
Mark & Tonia Ruport*
Jane Ryan
William J Ryan
Alison Sadowy
Donna Saied
Steve Sallee

Venkata Sanjamala
Paul & Maggie Scanlon*
Andrea & Scott Schammel
Carla & Randy Scheepstra
Russell Scheller
Sarah Schettle
Mike & Anne Schletty*
Zane Schletty
Scott Schley
Eric Schluttner
Jim Schmeichel*
Bradley Schmidt*
Dave & Lucy Schmidt*
Diane C Schmidt*
Julie A. Schmidt
Joseph Schmitt
Fallen Officer Shawn Steven Schneider
Kathy Schroeder
Rose & Jason Schuh-Dodge
Billie Schultz
Carolyn Schultz
Charla Schultz
Nina & Fritz Schwenk
Noel Sederstrom
Faith Sell
Dana Sellnow-Njus
Randy Sendek
Theresa Severson
Phyllis A. Sexton
Barbara Seydel*
Neel & Meera Shah
S. Shannon
Lynda & Frank Sharbrough*
Gladys Shea

Jane & Curt Shellum*
Hassan m Sheriff
Steven Sherry
Cheolsu Shin
James & Carol Shipman*
Julie Shirley
Kristen Shogren
Gary Sieck
Sandra Simar
Kimberly Simons
Joseph & Julia Skalski
John & Fran Skiffington
Leann Slavins
Lynne Sloan
Carin Smith
Emily Smith
John G. Smith & Jane E. Smith
Allen & Darcy Snyder
Richard Sohre
Kristin & Peter Somers
Jeannie Sperry
Steven Spohn*
Stephen & Anne Sponsel*
Rebecca Sprenger
Kathryn Springer
Mary St.Marie*
Leslie Stauber
Donald Steine
Nicholas Steven
Dawn Stevens
Todd & Martha Stevens
Joe Stewart
Catherine Stoneman
Diane Storm
David & Rachel Strauss
Rich Stroebel
Jeff Strommen

Mary A Svoboda
Jerry & Kristine Swanson
Barbara Tatzel
Jason & Carla Tentis
Kent Thielen MD*
Jennifer Thorson
Bjorg Thorsteinsdottir & Bo Enemark
Madsen MD
R. T. Tilbury
Charles Tindal*
Kevin Toft
Michael Torchia
Kevin Torgerson*
Stacey Tovar
Morgan Towell
Charles & Vicki Treder*
Brenda Trisko
Jeffrey Tunnell
Troy & Desiree Tynsky
Sue Underdahl*
Laura Unverzagt
Sudhi Upadhyaya
Patty Utech
James & Margaret Utz
Robert A. VanDeVoorde
Laura VanMeter
William Venhuizen
Emily & Harold Vetter*
Roger Vick
Keiran Vitek
Mary Vorndran
Mike & Becky Waara*
Paul Walding
Brenda Walker*
Macayla Walker
Brenda Walsh
Alisa Walz-Flannigan

James Ward
Melissa Ward
Scott Watson
Karen M. Weavers
Brian & Vivian Weinschenker*
Sarah Welper
Mary Welti
Jodie & Bob Westland*
John Wheeler*
LaChelle Wieme
Mathieu Wiepert & Claudia Lucchinett
John & Debra Wilkinson
Mike & Barbara Willard*
Aileen Williams*
Linda Wilson*
Jacque & Mike Wilson*
William E Wimsett*
Brian & Cheryl Winters
Stephanie & Keith Witwer
Joyce Wood*
Woodruff Family
John Woollard
Tracey Wozniak Rutherford
Julie Wrubel*
Jim Youdas*
Diane Youngs*
Robin Zangarine
Elizabeth Zimmermann
Laurie Zoecklein*
Jean Zuroski

22 Anonymous*



THANK YOU FOR BEING BOLD & LIVING UNITED



Memorial and Tribute gifts are given in honor of a loved one or friend as a lasting remembrance of helping others in partnership with United Way.

LEADERS IN GIVING RECOGNITION LEVELS

Alexis de Tocqueville Society: \$10,000+

Diamond: \$7,500-\$9,999

Emerald: \$5,000-\$7,499

Platinum: \$3,000-\$4,999

Gold: \$2,000-\$2,999

Silver: \$1,000-\$1,999

Bronze: \$750-\$999

Builder: \$500-\$745

We endeavor to ensure the accuracy of this Leaders in Giving list of donors. If your name is incorrectly listed in any way, please accept our apologies and bring the error to our attention so our records may be corrected. To make corrections, contact us at Donor Stewardship, (507)287-2000 or rd@uwolmsted.org.

CORPORATE LEADERSHIP GIFTS & GRANT SUPPORT

7 Up Bottling Company
 Accounting & Tax Associates Inc
 Allegra
 Associated Bank
 Benchmark Electronics, Inc.
 Border States Electric
 Bremer Bank**
 Carl & Verna Schmidt Foundation
 Crenlo, LLC**
 CRW architecture + design group
 Davies Printing Company
 Domaille Engineering, LLC
 GEOTEK
 Girl Scouts of Minnesota & Wisconsin
 Granite Equity Partners
 Home Federal Savings Bank
 IBM**
 Knutson Construction
 KTTC & Fox 47**
 Land O' Lakes Inc.
 Mayo Clinic Rochester**
 McNeilus Truck and Manufacturing, Inc.**
 Nelnet
 Olmsted County**
 Olmsted Medical Center
 People's Energy Cooperative
 Pharmaceutical Specialties, Inc.
 Powers Ventures
 Premier Banks
 Principal Financial Group
 RBC Wealth Management
 Rochester Area Foundation
 Rochester Athletic Club
 Rochester Magazine
 RSM US LLP
 Scheels
 Schmidt Goodman Office Products
 Seneca Foods Corporation
 Senior Citizens Services Inc
 Smith, Schafer & Associates, Ltd.
 St John the Evangelist Catholic Church
 Strut**
 Target - Winona
 Target - North
 Target - South
 The Boldt Company
 The Salvation Army Rochester
 Minnesota
 Think Mutual Bank**
 U.S. Bank**
 United Parcel Service
 University of Minnesota Rochester
 West Bank
 Western Digital
 Xcel Energy Corporation

LIFETIME GIFTS HOPE LEGACY SOCIETY

Jeffrey Allman
 Anne & Carl Berberich
 Emily Joy Colbenson
 Maureen Gwynn
 Donald Halley
 Debbie Hoffman
 Betty Hutchins
 Lois A Jorstad Trust
 Beverly Livesay
 Doug & Sue Luebbe
 Joanne & Dick Rosener
 Bonita & Russell Schultz
 Judy & Jim Sloan Foundation
 Janet Notheis Volkmar - Endowed
 Fund for Kids
 1 Anonymous

GIFTS IN MEMORY OF

John Bohls
 Dr. Sam Bydon
 Sylvia Darlene Goetzman
 Margaret Hoffman
 Ruby & Jerry Jerabek
 Felix Overton

GIFTS IN HONOR OF

Paul & Sue Rohde
 John & Donna Wold
 Judy Young
 Ron Zwicker



JEROME FERSON
UWOC PRESIDENT

"Your investment in our community has resulted in life-changing events for individuals in need."

*This listing includes Corporate Giving, Event Sponsorship, Grant support and In-Kind Support of \$1000+
 **Indicates Investments of \$10,000+*



United Way of Olmsted County

903 West Center Street, Suite 100
Rochester, MN 55902

Email: uwoc@uwolmsted.org

Phone: (507) 287-2000

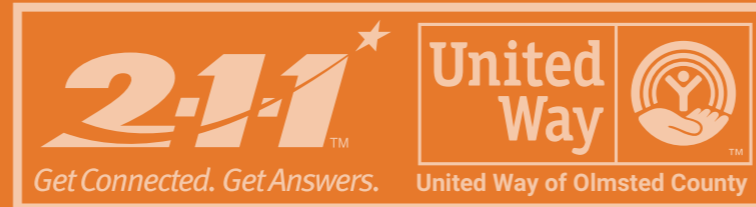
NONPROFIT ORG.
U.S. POSTAGE PAID
ROCHESTER, MN
PERMIT NO. 39

ADDRESS SERVICE REQUESTED

If you or someone you know needs help call United Way's resource referral line 2-1-1 to learn about assistance available in our area.

DIAL 2-1-1 or 1-800-543-7709

BE BOLD. LIVE UNITED.



903 WEST CENTER STREET SUITE 100. ROCHESTER MN, 55902 - PH.507-287-2000

PLEASE VISIT OUR WEBSITE AT WWW.UWOLMSTED.ORG