

United Way of  
Olmsted County

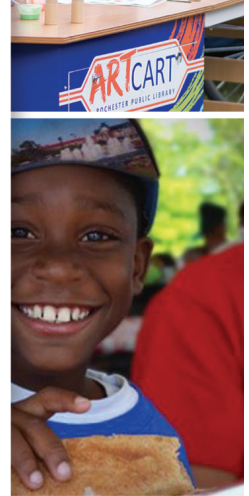
2019 Annual Report



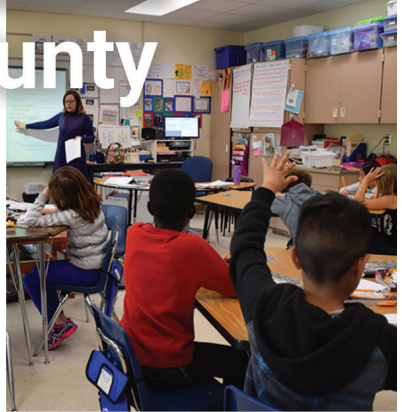
This is more than an annual report  
**IT'S A STORY ABOUT HOPE**



LIVE UNITED



United Way



United Way of Olmsted County





# CONTENTS

- 03** MESSAGE FROM OUR PRESIDENT
- 04** OUR MISSION
- 05** OUR YEAR IN REVIEW
- 07** OUR IMPACT ON EDUCATION
- 09** OUR IMPACT ON HEALTH + WELLNESS
- 11** OUR IMPACT ON FINANCIAL STABILITY
- 13** OUR COMMUNITY IMPACT
- 15** OUR UNITED WAY FINANCIALS
- 17** OUR BOARD + STAFF
- 18** OUR COMMUNITY PARTNERSHIPS
- 19** WOMEN UNITED
- 20** LEADERS IN GIVING LISTING
- 25** CORPORATE LEADERSHIP GIFTS + GRANTS



# Message from our UWOC President

**2018 was a momentous year in our journey to help individuals and families in need in our community reach their potential.**

A single mother struggling to find affordable, quality childcare finds the support she needs, allowing her to maintain employment and provide opportunities for her children.

A family coping with financial stress and mental illness gets the resources they need to achieve their goals.

A lonely senior citizen striving to remain independent finds companionship and support to maintain his home and age safely in place.

Last year, each of these people and over 40,000 more like them were directly impacted by United Way of Olmsted County and thousands more were indirectly touched.

These families and individuals exemplify the impact our donors and volunteers make by Living United.

In addition to engaging over 8,000 donors, in 2018 we involved nearly 1,000 volunteers directly in United Way's work and connected thousands more to opportunities throughout our community through our online volunteer matching tool, Get Connected. Volunteers served on our funding review teams, in the tax program, Running Start for School, campaign, as well as other special projects—totaling over 5,000 hours!

2018 also marked an exciting year of transition in the way we approach community change and help individuals in need reach their potential.

United Way goes beyond single-issue solutions and temporary fixes. Our community impact strategies are integrated and focus on ensuring children are prepared for school, youth develop skills and abilities they need to thrive in the job market, and people of all ages have an opportunity to improve their economic status and live a healthy life.

In addition to our ongoing work across the spectrum of education, health, and financial stability, two very exciting initiatives launched in 2018: Cradle 2 Career and the Meadow Park Initiative.

Cradle 2 Career is a community-wide initiative, a network of public, private, and non-profit organizations. Cradle 2 Career facilitates, advances, and evolves a common agenda to ensure all children in our community achieve key educational milestones and have a clear path to economic prosperity. United Way serves this initiative by providing office space, as well as administrative, data, and communications support.

The Meadow Park Initiative is a partnership between Family Service Rochester, Intercultural Mutual Assistance Association, United Way of Olmsted County, and the Meadow Park neighborhood in Southeast Rochester. We are building a long-term collaboration between residents and community organizations that brings resources to the neighborhood, enhances a sense of community, and supports residents in achieving their goals. As a lead agency in the initiative, United Way provides funding, communications, and administrative support.

**These initiatives, along with all of our other work highlighted throughout this report, represent the power of community building. That's what it means to Live United. When you choose to get involved, to give back to the community through United Way, you're impacting the entire spectrum of need through a single act. To all our donors, volunteers, and partners, thank you for Living United.**

*Jerome Ferson  
President UWOC*



### OUR MISSION

**Uniting people and resources to improve people's lives in our community.**

Everyone can benefit from an act of Local Love, and United Way of Olmsted County needs you to join the fight. Because your passion, expertise, and resources will help the fight become a win. A win that's not just a short-term contribution but a long-term and sustainable solution.

Showing Acts of Local Love can be a fast, fun, and simple way to support United Way's mission and commitment to making Olmsted County a better place for ALL to live.

**See the power of Local Love in Action by getting involved to help make a difference in our community, today!**

### OUR VISION

**To be an agent of community change that inspires hope, creates opportunity, and champions people in need.**

We win by living UNITED. By forging unlikely partnerships. By finding new solutions to old problems. By mobilizing the best resources. And by inspiring individuals to join the fight against our community's most UNIGNORABLE issues.

We are part of a network of 1,800 United Ways in 41 countries and territories. But the place that needs you most is right here, in Olmsted County. And we want to inspire ALL of Olmsted County to engage in Acts of Local Love.

**Are you ready to take the challenge?**

### UNITED WAY'S COMMUNITY IMPACT

*As highlighted throughout this report, last year was another very active and productive year at United Way of Olmsted County. By connecting thousands of donors and volunteers throughout our community with strategies grounded in research, we are continuously improving the lives of people in need and helping make our community a better, healthier place for ALL to live.*



#### KNOWLEDGE & SKILLS

When children and youth have strong, stable learning and growing environments, they can be more successful in achieving lifelong success and reaching their full potential.



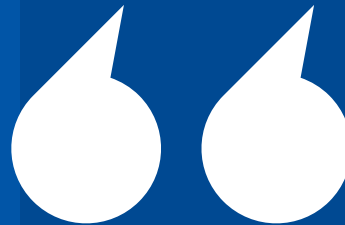
#### A HEALTHY LIFE

Without good, stable health, people struggle to provide adequate income and pursue education for reaching their full potential.



#### A STRONG FOUNDATION

Living in a financially stable household is a major determining factor in the education and future success of children.



*"All of us want to live in thriving communities with quality education, good health, and strong financial stability - where everyone reaches their full potential.*

*Thank you for being a significant part of our community and for your contributions to United Way."*

# OUR YEAR IN REVIEW

## MAKING LOCAL ISSUES #UNIGNORABLE

Local issues can be easy to ignore – at United Way we’re making them unignorable. Because we can’t solve issues affecting our community **UNTIL WE HAVE THE COMMUNITY’S ATTENTION.**

**Poverty. Homelessness. Mental health. Social Isolation. These are just a few issues that directly impact our community and hold too many people back.**

United Way fights for the health, education, and financial stability of every person in our community. We’re committed to channelling Local Love in all we do...igniting the desire in everyone to improve this community we call home. Whether that means helping a vulnerable child, working with isolated seniors, or anything in between, it’s all about building connections and delivering support to the people and communities who need it.

United, we can mobilize people to address these difficult local issues, collaborate with a network of partners to solve problems, and give support to community programs that are proven to work.

**There are essential opportunities that we all need to reach our potential: a quality education that leads to a stable job, income that can support a family through retirement, and achievement of our optimal health.**

**We fight for every individual in our community by focusing on:**

### EDUCATION

Preparing all children and youth to succeed in school and in the community.

### HEALTH

Promoting physical and mental wellbeing for people at all ages.

### FINANCIAL STABILITY

Moving individuals and families toward financial independence and ensuring basic needs are met.

UNITED, we are breaking negative cycles and tackling the root causes of problems to create lasting change. UNITED, we are mobilizing the community and building collaborations that produce results. UNITED, we are changing Olmsted County for the better for ALL of us.



# 44,464

TOTAL NUMBER OF OLMSTED COUNTY COMMUNITY MEMBERS SERVED



# 15,901

CHILDREN AND YOUTH SERVED

1,363 youth were served through our partnership with Community Schools



# 9,788

PEOPLE WITH IMPROVED HEALTH AND WELLNESS



# 30,691

PEOPLE WITH INCREASED STABILITY (INCOME + BASIC NEEDS)



**IMPROVING LIVES AND EMPOWERING EVERY FAMILY TO SUCCEED BY UNITING AROUND EDUCATION, HEALTH, AND FINANCIAL STABILITY - THE BUILDING BLOCKS FOR A GOOD LIFE AND A STRONG, EQUITABLE COMMUNITY.**

**BARBARA HELPS TO ENSURE KNOWLEDGE + SKILLS**

*"I have always been active in the community, but I count on United Way to really peel back the onion and look at what are the sources, and not just the symptoms, but what are the root causes of many of our problems, to gather data and really figure it out. And then to present that to us as a community so that we can channel our giving in directions that are most impactful. So I have always been a supporter and a believer in United Way. And I'll continue to do that because it is such a good methodology for how we approach solving problems in our community."*



*Barbara Jordan  
Education Administrator  
Mayo Clinic*

**BILL & ELAINE FIGHT FOR A HEALTHY LIFE**

*"You can read in the paper and see in the news - statistics about education, drug addiction, and poverty but until you see a human face, it doesn't tug at the heart as much as it should. And to have these interactions is really powerful because it re-confirms why we do things, and the worth of an organization like United Way for connecting those who have needs with those who have the resources, skills, and talents that can help those people in need."*

*Bill Wiktor  
IBM Retiree & UWOC volunteer*



*"In Rochester, we really do have a strong support system! It's a giving community, and I think that brings a lot of value. And for me personally, it kind of fills a sense of purpose, especially as I'm retired."*

*Elaine Case  
IBM Retiree*

**HELPERS IN OUR OWN COMMUNITY**

**ERIKA HELPS TO BUILD A STRONG FOUNDATION**

*"Meadow Park Initiative is a beautiful demonstration of many cultures working together! Thanks to the support and interest of United Way of Olmsted County, Family Service Rochester, and IMAA, the residents of Meadow Park create bridges to improve many lives and build a strong social system in this area. Me enorgullezco mucho de todo lo que hemos logrado. !Muchísimas gracias."*



*Erika S Peña Reino  
Meadow Park Community Organizer  
Family Service Rochester*

# A SNAPSHOT OF OUR IMPACT ON EDUCATION



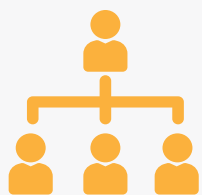
When children and youth have strong, stable learning and growing environments, they can be more successful in achieving lifelong success and reaching their potential.

## Did you know...

- *Only **30%** of Rochester children are fully ready for kindergarten in the areas of numeracy and literacy.*
- *Literacy is a critical skill for school, work, and life success. **42%** of Olmsted County third graders do not read at grade level by the end of grade three.*
- *Every **\$1** invested in out-of-school-time programs results in a **\$10.51** return with the benefits of improved school performance, reduced crime and welfare costs, and increased wages.*







**+750**  
HEALTHY RELATIONSHIPS

750 youth are building healthy relationship skills with help from after-school and summer programming that promotes social skills and hands-on learning.

578 students in Olmsted County are now building positive attitudes towards school and learning with help from partners who provide mentoring, tutoring, and out-of-classroom learning experiences.



**578**  
POSITIVE LEARNING EXPERIENCES

**618+**  
DEVELOPMENTAL MILESTONES



618 children in need are now achieving age-appropriate developmental milestones to help them become kindergarten-ready through programs that provide early childhood education, family supports, and tuition assistance.

## BAILEY & BARBARA

Bailey was born into a chaotic world with an unstable family environment. She has struggled with mental health concerns since a young age and this affected her education. With help and encouragement from her grandmother, Bailey accepted an opportunity to enroll at the Alternative Learning Center (ALC). She was able to get the extra support and resources she needed to explore, learn, thrive, and engage with the community in ways that would have been out of reach.

*"If I didn't come to ALC I probably wouldn't be here right now, I'd probably be a drop-out. I hated school back in the day, but I've worked through it and it's been an amazing experience. Not just good, it's beyond that! We've done all these great things, and it's nice just to tell other people about it."*  
-Bailey, ALC Graduate

With United Way's support of quality education programs like Rochester Full-Service Community Schools, Bailey was able to graduate on time and is looking forward to becoming a vet tech through RCTC.

*"So you're not only learning but you're serving. That is wonderful. So I think that message needs to get out there. Because honestly, I think people have misconceptions of what ALC is. But I'm just so glad I had this conversation with you. Because now, I can tell the good story."*  
-Barbara, donor

Bailey's life changed for the better with help from donors like Barbara, who took action in her community. Bailey went through some tough times and got the support she needed. Now she is planning her future.



Access to quality education is an #unignorable issue facing Olmsted County and Minnesota communities.

That's why we support programs that connect youth and families to the resources they need, when they need them. It's all thanks to people like you who show your local love by giving back to this place we call home.

To find help or to help people like Bailey, visit: [www.uwolmsted.org/give](http://www.uwolmsted.org/give) or call 211.

# A SNAPSHOT OF OUR IMPACT ON HEALTH + WELLNESS



Physical and mental health are foundational requirements to a good quality of life. Without good, stable health, people struggle to provide adequate income and pursue education for reaching their potential.

## Did you know...

- **29%** of Olmsted County residents have ever had a mental health condition.
- **Social isolation** is a significant threat to physical health.
- **30%** of uninsured adults go without needed medical care due to cost.



**2,706+**  
INDIVIDUALS IMPACTED



2,706 people in need received mental health education and treatment through partners that work with individuals, students, and families impacted by mental illness and poor mental health.

20,975 hours were donated by volunteers helping seniors in need, whether by providing companionship and friendly visitors or caregiver support.

**20,975**  
HOURS DEDICATED TO HELPING SENIORS



**2,457**  
SECURED HEALTHCARE ACCESS



2,457 people in need obtained or retained health insurance through programs serving recent immigrants and refugees, providing supportive housing, and providing health services.

## VANESSA, BILL & ELAINE

Vanessa has lived around addiction her whole life and eventually struggled with it herself. Searching for answers and support, she was referred to Recovery Is Happening, which provided recovery services, counseling, and a sober living environment.

*"They say that when you are feeling most uncomfortable – that's when you are making progress or learning. And it was hard, but today I've got a year and two months clean and that's the longest I've made it. It is all through the help of sober living, treatment, Recovery Is Happening, and United Way.*

*If it weren't for programs like this, and people like you... I would be dead."* -Vanessa, Recovery Is Happening participant

Through United Way's support of health and addiction recovery programs like Recovery Is Happening, Vanessa is now able to work her full-time job while knowing that she is learning and growing into a healthier version of herself.

Vanessa's life changed for the better with help from donors like Elaine & Bill, who took action in their community. Vanessa went through some tough times and got the support she needed. **Now she is inspiring others to do the same.**

*"You know, United Way is the first entry point of somebody in need. That's what I like about United Way, either they step in and do something directly, or they know of a partner organization that can step in and help out in that situation. And it's great that United Way and other partner organizations can match the need with the volunteers that want to help out, so that's why I'm kind of proud of Rochester."*  
- Bill & Elaine, UW donors



**Addiction is an #unignorable issue facing Olmsted County and Minnesota communities.**

That's why we support programs that help individuals and families stay sober and supported while working towards the future. It's all thanks to people like you who show your local love by giving back to this place we call home.

**To find help or to help people like Vanessa, visit: [www.uwolmsted.org/give](http://www.uwolmsted.org/give) or call 211.**

# A SNAPSHOT OF OUR IMPACT ON FINANCIAL STABILITY



People living in financially unstable homes frequently encounter other foundational quality-of-life needs, such as good health and quality education. Without a stable and family-sustaining income, people can find themselves falling behind rather than moving forward in creating a good quality of life.

## Did you know...

- Nearly **500** people are experiencing homelessness in Southeast Minnesota on any given night.
- **8.2%** of Olmsted County residents are food insecure and approximately **4,400** of these individuals are children.
- The Earned Income Tax Credit (EITC) is one of the largest and most successful federal anti-poverty programs, yet **1 in 5** eligible Minnesota taxpayers does not access the EITC.
- **10%** of Olmsted County residents have a disability, including **30%** of adults over the age of 65.



**UNITED, WE'RE FIGHTING FOR HOUSING STABILITY, FOOD SECURITY, SENIOR INDEPENDENCE, FINANCIAL EDUCATION AND SERVICES, CAREER PATHWAYS, AND MORE TO HELP INDIVIDUALS AND FAMILIES ACHIEVE FINANCIAL STABILITY.**

150 people moved from immediate, short-term shelter into stable housing with help from partners that provide supportive housing, rent assistance, and whole-family supports.



**150+**  
PEOPLE RECEIVING  
HOUSING SUPPORT

**2,847,742**  
NUTRITIOUS  
MEALS



2,847,742 nutritious meals were received by people in need through meal delivery programs, community-style meals, and food shelves and food banks.

763 children and youth in need experienced safe interactions with caring adults through partners providing short-term childcare and safe visitation services.

**763+**  
SAFE  
INTERACTIONS



**SARA  
& TYLER**

Sara is a single mother of 3 who had been chronically homeless for the past seven years when she moved to Rochester to find a safer place for her family. Struggling to find stability and secure housing, she was connected to The Salvation Army and their program Access Home. They were able to help her obtain transitional housing, as well as guiding her through financial literacy courses.

*“By completing the steps and securing a home, paying for your rent on time and your utilities. By going to the budget class. By having their support...knowing that someone is going to be there for you – they helped me get my self confidence back. Now that I’m here I feel like I have a new life and a fresh start, and I want to give back to the community that helped me get here.” -Sara, Access Home participant*

Sara has overcome many barriers, and with support made possible by United Way and donors like Tyler, she is more eager than ever to plan for the future and is well on her way to homeownership.

*“The realistic story is that for your son - housing is the stability of knowing where he’s going to be coming home to, where his mother is all the time, and I am just so thankful for this opportunity United Way gave us to interact and hear your fantastic story.*

*When you’re a donor it’s almost like you only look at the numbers, but this really makes it worth it. To see the change that you’re having in your life and know you’re not looking for hand-out, you’re looking for a hand-up.” - Tyler, UW donor*

**A lack of reliable housing support is an #unignorable issue facing Olmsted County and Minnesota communities.**

That’s why we support programs that help keep individuals and families housed and financially stable. It’s all thanks to people like you who show your local love by giving back to this place we call home.

To find help or to help people like Sara, visit: [www.uwolmsted.org/give](http://www.uwolmsted.org/give) or call 211.

# OUR COMMUNITY IMPACT



## OUR APPROACH STARTS WITH COMMUNITY

*Through summits, community conversations, and research, we identify the root cause of some of our community's most complex challenges.*

## WE WORK TO IMPROVE SYSTEMS

*We work across boundaries and between organizations to strengthen connections and build greater effectiveness.*

## OUR PARTNERS DRIVE CHANGE

*We pool the resources of our public, private, and non-profit partners to multiply our impact through giving, advocating, and volunteering.*

## WE INVEST IN KEY FOCUS AREAS

*We focus donor contributions on strategies in Education, Health, and Financial Stability that change individual lives and benefit the entire community so everyone has the same opportunities to succeed.*



## FREE TAX PREPARATION



**LuAnne,**  
tax program participant

*Filing tax returns brings back millions of dollars into communities each year, but not everyone in Olmsted County is able to access the tax credits they have earned. Barriers to filing taxes come in many forms such as financial barriers, transportation barriers, and language barriers. Thanks to free tax preparation assistance provided by United Way and The AARP Foundation, more than 3,500 local households are maximizing their refunds, bringing millions of dollars back to our community each year.*

*LuAnne, a resident of Rochester, has been filing her taxes with United Way and The AARP Foundation for the past 5 years. "It is a secure and reliable place to go to be helped by knowledgeable people," she says. "The fact that they're all (tax preparers and support staff) volunteers amazes me." One hundred volunteers give more than ten thousand hours of their time to provide this crucial service free of charge. With the support of volunteers and donors like you, thousands of people like LuAnne gain access to tax credits and refunds that help keep families financially stable.*

*United Way and The AARP Foundation are proud to continue to develop the program to better meet the needs of community members like LuAnne. In the upcoming income tax season, United Way of Olmsted County aims to recruit even more volunteers who want to give their time and talents to the program, so join us today. Please review our volunteer opportunities in the fall at [volunteer.uwolmsted.org](http://volunteer.uwolmsted.org)*



## 211 RESOURCE + REFERRAL

### The Right Resource, Right Away!

*"I don't know if you remember me, but you referred (my daughter) to a mental health provider and gave us lots of supportive ideas...I want you to know that she hit her 1 year sobriety mark this past month," recounts a caller who was helped by 211.*

*211 is an unmatched resource. It is available 24/7 and is accessible by phone, text, chat, and self-searches online. Community members can find a multitude of resources such as childcare information, housing services, mental health resources, assistance for utility bill payments, information on volunteering and donating goods, plus much more.*

*Health and human services needs know no boundaries. One interaction can be a life changing experience, as demonstrated by the caller above. "(My daughter's) life has dramatically changed and she continues to make positive choices. I am so grateful to you for helping her find a new path in life," says the caller.*

*Together, we are working to continue to provide information on critical resources to all Olmsted County residents and Minnesotans. Supporting 211 ensures Olmsted County residents and all Minnesotans can find the right resources at the right time so that all community members can reach their full potential.*



## UNITED WAY'S COMMUNITY IMPACT PROGRAMS

### FULL-SERVICE COMMUNITY SCHOOLS

A community school is both a place and a set of collective partnerships between Rochester Public Schools, United Way of Olmsted County, the individual school site, and other community resources. Community Schools organizes community resources to support student success in attendance, behavior, and academics at Gage Elementary, Riverside Elementary, and Rochester Alternative Learning Center. As a lead partner in the effort, United Way facilitates community resources to support student success.

### CRADLE 2 CAREER

As a network of public, private, and independent organizations, Cradle 2 Career facilitates, advances, and evolves a common agenda to ensure all children in our community have a clear path to economic prosperity through family, education, community support, and opportunities. United Way provides office space to the network, as well as administrative, data, and communication support.

### MEADOW PARK INITIATIVE

The Meadow Park Initiative is a partnership between Family Service Rochester, Intercultural Mutual Assistance Association, United Way of Olmsted County, and the Meadow Park neighborhood in Southeast Rochester. We are building a long-term collaboration between residents and community organizations that brings resources to the neighborhood, enhances a sense of community, and supports residents in achieving their goals for their families and their neighborhood. As a lead agency in the initiative, United Way provides administrative support.

# OUR UNITED WAY FINANCIALS

*United Way of Olmsted County unites people and resources to improve lives in the community with a focus on health, education, and financial stability - the building blocks for a good quality of life.*



## GROWING AND CHANGING IN OUR OWN COMMUNITY

Revenue, expenses, assets, and liabilities for the year April 1, 2018 - March 31, 2019.

Visit [www.uwolmsted.org/accountability](http://www.uwolmsted.org/accountability) to view the organizations full audit report.

## REVENUE

Public Support	\$3,418,691
Donor Selected Designations	-\$592,225
Estimated Uncollectible	-\$106,671
Uncollected Pledge Adjustments	\$91,517
Programs & Grants	\$250,116
Building Rental	\$11,289
Administrative Fees	\$3,957
Investment Income	\$59,129
Contribution of Bequest & Trusts	\$14,056

**TOTAL REVENUE \$3,149,859**

## EXPENSE

Grants & Program Services (Community Fund)	\$2,236,514
Donor Selected Designations	-\$592,225
United Way Programs	\$513,613
Community Impact	\$337,665
Development & Fundraising	\$449,120
Management & General	\$298,779

**TOTAL EXPENSE \$3,243,466**

## CHANGE IN NET ASSETS

**TOTAL CHANGE IN NET ASSETS -\$93,607**





## ASSETS

Current Assets	\$4,616,006
Property & Equipment	\$609,557

**TOTAL ASSETS \$5,225,563**

## LIABILITIES

Current Liabilities	\$1,009,734
---------------------	-------------

**TOTAL LIABILITY \$1,009,734**

## NET ASSETS

Without Donor Restrictions	\$517,479
Investment in Property, net of debt	\$609,557
Designated	\$519,551
With Donor Restrictions	\$2,569,242

**TOTAL NET ASSETS \$4,215,829**

## NET ASSETS + LIABILITIES

**TOTAL NET ASSETS + LIABILITIES \$5,225,563**

# BOARD + STAFF



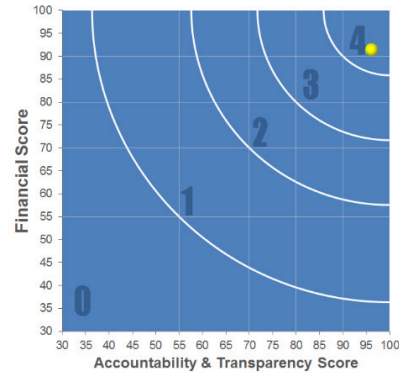
United Way of Olmsted County's Board of Directors and Staff are foremost a guardian of values on behalf of its stakeholders. The Board of Directors provide strategic leadership and vision through which the creation and implementation of strategic plans and policies are developed by staff.

## STAFF

- Jerome Ferson  
President UWOC
- Emily Johnston  
Vice President of Community Impact
- Jennifer Teske, CFRE  
Vice President of Resource Development
- Chelsey Mingone  
Director of Communications and Events
- Justin Stoll  
Community School Partnership Specialist
- Zeni Aly  
Community Impact Administrative Assistant
- Kelsey Zubke  
Impact Analyst
- Grace Pesch  
Impact Program Manager
- Kris Brewer  
Resource Development Operations Specialist
- Antonio Navarro  
Resource Development Specialist
- Bonita Schultz, CFRE  
Major Gifts and Planned Giving Director
- Dale O'Groske  
Chief Financial Officer
- Thieulan Duncanson  
Finance Assistant
- Pam Wright  
Executive Assistant

## BOARD OF DIRECTORS

- Jerome Ferson  
President UWOC
- Tory Johnson  
Board Chair
- Walt Ling  
Immediate Past Board Chair
- David Oeth  
Vice Chair
- Jeffrey Hazard  
Treasurer
- Paul R. Tieskoetter  
Campaign Chair
- Chris Nelson  
Past Campaign Chair
- Shamila Amaarasekera  
Josh Burgess  
Emily Colbenson  
Chad DeCook  
John Eckerman  
Sasha Gentling  
Mark Hettinger  
Melissa Johnson  
Lindsey Lehman  
Donna Lun  
Sandra Means  
Omar Nur  
Angie Puffer  
Jamie Rothe  
Kim Sin



## GIVING WITH CONFIDENCE



**United Way**  
2019 Membership Requirements Completed

With a commitment to transparency, accountability, and results, United Way of Olmsted County enables you to make a difference right where you live and see the difference you are making.

## CHARITIES REVIEW COUNCIL: MEETS STANDARDS SEAL



United Way of Olmsted County meets all 27 Accountability Standards of the Charities Review Council. National guidelines allow for up to 30 percent of donations to be spent on administrative costs. We spend approximately 20 percent



# OUR COMMUNITY IMPACT PARTNERS



## WE WIN BY LIVING UNITED

*By forging unlikely partnerships. By finding new solutions to old problems. By mobilizing the best resources. And by inspiring individuals to join the fight against our community's most daunting social crises. We all have influence and relationships that can help make sustainable change a reality.*

*By harnessing time, talent, and treasure from people across our community, we can provide immediate assistance to our most vulnerable neighbors while addressing the root causes of our community's longstanding challenges to change lives for the better. But we don't do it alone.*

*Together, we involve experts and leaders, practitioners and people from all walks of life into the solution conversation. We're the stop-talking-start-doing-band-together-and-take-on-impossible-task-masters. No matter the odds, we surround a problem, and we fight to win—with results to show for it.*

*United Way engages a strategic and diverse network of community supports to help address the complex causes of poverty by creating long-lasting change in the interconnected areas of knowledge and skills, a healthy life and a strong foundation. These partnerships and the rest of United Way's work help change community conditions that challenge all lives, bring people together to create lasting solutions, and improve lives today for better communities tomorrow.*

## EDUCATION

**Gage East Apartments:** Center City Housing Corporation

**Girl Scouts Connectz:** Girl Scouts of MN WI River Valleys

**LEAD Mentorship:** Olmsted County

**Rochester Reading Champions:** Rochester Public Library

**Sports Mentorship Academy:** Sports U

**Success by Six:** Byron Community Education, Civic League Day Nursery, Families First of Minnesota-Head Start, Good News Children's Center, Tri-Valley Opportunity Council

**Teen Ascent:** Boys & Girls Club of Rochester, Quarry Hill Nature Center

**Youth Afterschool & Summer Programming:** Boys & Girls Club of Rochester

**Teen-Thrive:** Rochester Area Family YMCA

## HEALTH

**Community Health Worker:** Intercultural Mutual Assistance Association

**Families Matter:** Family Service Rochester, NAMI Southeast Minnesota

**Good Samaritan Health Clinic:** The Salvation Army

**Happy Teeth:** Children's Dental Health Services

**Silver Creek Corner:** Center City Housing Corporation

## A STRONG FOUNDATION - IN INCOME

**Achieve Homeownership:** Three Rivers Community Action

**Family Stabilizer:** Family Promise Rochester

**Financial Literacy:** Catholic Charities

**Pathways to College and Career:** Hawthorne Education Center

**Refugee Resettlement:** Catholic Charities

**Access Home:** The Salvation Army

## A STRONG FOUNDATION - IN BASIC NEEDS

**Crisis Nursery:** Families First of Minnesota

**Family Access Center:** Family Service Rochester

**Food Shelf:** Channel One Regional Food Bank

**Living Independently with Knowledge (LINK):** Lutheran Social Service of Minnesota

**Legal Assistance:** Legal Assistance of Olmsted County

**Meals on Wheels:** Family Service Rochester

**Noon Meal:** The Salvation Army

**Rent Assistance:** The Salvation Army

**Senior Independence:** Elder Network, Family Service Rochester, The Salvation Army

**Supported Employment:** Ability Building Center, PossAbilities of Southern MN



# WOMEN UNITED

## THE CARING POWER OF WOMEN

Women United unifies the collective caring power of women who are Leaders in Giving.

Women United is an affinity group of United Way. United Way of Olmsted County's Women United promotes support of signature issues impacting early childhood literacy and helping children & youth succeed in school.

Janice Aaker\*  
Susan Ahlquist\*  
Jennifer Albright\*  
Amy Alexander  
Brandee Anderson  
Kristy Arndt Turner\*  
Irina Bancos  
Catherine Benson\*  
Brenda Berg\*  
Audrey Betcher\*  
Lori Blauwet  
Patricia Bolger\*  
Beth Borg\*  
Jennifer Boysen\*  
Sheri Brandvold\*  
Kris Brewer\*  
Melissa Brinkman\*  
Toni Burns\*  
Nicole Callahan\*  
Heidi Campbell\*  
Elaine Case\*  
Lisa Colborn\*  
Erin Collins  
Lisett Comai-Legrand\*  
Debra Cox\*  
Angela Cramer\*  
Michelle Daiss\*  
Debra Donahue\*  
Kathryn Doty\*  
Jane Drennan\*  
Holly Duck  
Kika Dudiak\*  
Sharon Dunemann\*  
Beth Elliott\*  
Julie Faust\*  
Judy Felten\*  
Sara Felts\*  
Bethanie Flattum  
Cathryn Fraser  
Lydia Gammell\*

Yolanda Garces\*  
Jennifer Garness\*  
Wendy Gay\*  
Karen Graszter\*  
Sue Greenberg\*  
Kristi Gross  
Jeanne Guyse\*  
Cheryl Hadaway\*  
Wanda Hagquist\*  
Valerie Halling\*  
Nicole Hanf\*  
Kathleen Harrington\*  
Julie Hebert  
Linda Hillenbrand\*  
Rebecca Hinchley\*  
Amy Hoerle\*  
Ronaele Hoffman\*  
Michele Hoover\*  
Shirley Hultz\*  
Betty Hutchins\*  
Kari Jadin\*  
Rachel Johnson  
Julia Johnson  
Marlea Judd\*  
Carmen Kane\*  
Revelee Kaplan\*  
Mary Kasten\*  
Lori Keith\*  
Denise Kelly\*  
Kyle Klarich\*  
Sandra Kopp  
Mary Kristo\*  
Rosemary Kuzma\*  
Debra Lafferty\*  
Sharon Lager\*  
Colleen Landherr Maddox\*  
Martha Laskar-Aleman\*  
Sandra Lee  
Maureen Lemens\*  
Susan Luebbe\*

Amy Mahon\*  
Linda Mansfield\*  
Margaret Mattke\*  
Kimberly McGarry\*  
Laura Meiners\*  
Kathleen Meyerle\*  
Amanda Mikhail\*  
Dawn Milliner\*  
Robin Molella\*  
Cynthia Molko\*  
Sally Morse\*  
Kelly Murphy\*  
Jean Murray\*  
Audrey Nelson\*  
Julie Neumann\*  
Keri Norman\*  
Erin Nystrom  
Marcia O'Brien\*  
Helen O'Connor\*  
Gwen Oeth  
Shelly O'Groske\*  
Mary Owen\*  
Michelle Oyen\*  
Melissa Payne  
Patricia Pellikka  
Sharon Peterson\*  
Julie Postier\*  
Rachel Pringnitz\*  
Anne Pronschinske\*  
Susan Reinke-Walch\*  
Jennifer Ridgeway\*  
Marilyn Riley\*  
Angela Roche\*  
Gayle Rock\*  
Jill Rock\*  
Nancy Rohde  
Joan Rose\*  
Joanne Marie Rosener\*  
Teresa Rummans  
Theresa Sanneman\*

Paula Santrach\*  
Gail Sauter\*  
Susan Scanlon\*  
Krista Schubert\*  
Bonita Schultz\*  
Nina Schwenk\*  
Wendy Shannon\*  
Carolyn Sogla\*  
Melissa Sperber\*  
Elizabeth Stewart\*  
Andrea Swanson\*  
Cynthia Sweeney\*  
Laura Swenson\*  
Tanja Taff Morello\*  
Sandra Taler\*  
Christina Tatting\*  
Carla Tentis\*  
Jennifer Teske  
Morgan Towell  
Julie Trumble  
Danielle Vlazny  
Rosalie Vondrashek\*  
Mary Vorndran\*  
Brenda Walsh  
Jennifer Walter\*  
Margaret Weglinski\*  
Lilli Weivoda\*  
Deborah West\*  
Jennifer Jane Westendorf  
Trisha White\*  
Julie Williams\*  
Megan Williams\*  
Jaymi Wilson  
Stephanie Witwer  
Sandra Woolley\*  
Diane Wottreng\*  
Karen Ytterberg\*  
Dee Dee Zwettler

\*Indicates Leaders in Giving 10+ years

**ALEXIS DE TOCQUEVILLE**

Lois A Jorstad Trust  
 Vanda A Lennon \*  
 Andrew Slain  
 Robert Stiles  
 Mary Ellen & Mark Warner \*

3 Anonymous \*

**DIAMOND**

Daniel Breilkopf  
 Jeremy Fogelson & Megan Fogelson-Dahlby  
 Mark & Kris Litzow \*  
 Bill & Julie Lower \*  
 Robert & Rebecca Nesse \*  
 Deanna Pafundi  
 Jennifer St Sauver & Mark Keegan  
 Dr Ebbie Stewart & H Paul Zellweger \*

**EMERALD**

Jesse & Kelly Arroyo \*  
 Brad & Kristelle Behle \*  
 Arthur Beyder & Alexandra Dara Brosky-Beyder  
 Keith Bible & Mary J Kasten \*  
 Jeffrey & Elizabeth Bolton \*  
 Elaine Case & Bill Wiktor \*  
 Richard Ehman & Margaret Houston \*  
 Beth Elliott & Steven Rose \*  
 David & Carol Foley \*  
 David & Anna Froehling  
 Morie & Marcia Gertz \*  
 Rich & Sue Greenberg \*  
 Mike & Mary Harper \*  
 Thomas & Mary Hartman \*  
 Andrea Jacobsen \*  
 David Langevin \*  
 Michael W Lee  
 Matt & Laurel Light \*  
 Levi Lundak  
 Ron Menaker & Linda Mansfield \*  
 Joseph Nelson  
 Jon Olson \*  
 Henry Pitot & Kika Dudiak \*  
 David & Julie Warner \*  
 John C & Irene S Wiltsie

Julie & Harry Hoffman \*  
 Vincent & Michele Hoover \*  
 James & Kathryn Hoyer \*  
 Karen Hurtis \*  
 Adam & Kelly Jacob \*  
 Dr & Mrs James W Jakub \*  
 Jan & David Jaspersen \*  
 Randolph Johnson \*  
 William & Barbara Jordan  
 David & Carole Joyce \*  
 Drs Barry & Beth Karon \*  
 Tom & Denise Kelly \*  
 Kirby Kough  
 Philip & Amanda Kuper  
 Michael & Amanda Mikhail \*  
 Mitchel R. Mindrum \*  
 John & Susan Modry \*  
 Dave & Cheryl Moertel \*  
 Wayne & Renee Nation \*  
 Dr Audrey M Nelson \*  
 Paul D Ness  
 David & Gwen Oeth \*  
 Lisa Drage & Eric Olson Family \*  
 Mitch & Michelle Oyen \*  
 Stephen J & Marilyn T Riederer \*  
 Michael & Dorine Ross \*  
 Teri Rummans & Carl Reading  
 William & Anna Sanchez \*  
 Paula Santrach \*  
 Forrest & Faye Sargent \*  
 Tom & Kathy Scheid \*  
 Kenley & Susan Schmidt \*  
 James & Judith Sloan \*  
 Craig Smoldt \*  
 Rob & Cathy Stroebel \*  
 Binnur & Timucin Taner  
 Lisa Kirkland & Warren Thompson \*  
 Lorraine Uthke & David Distel \*  
 Brian Van Abel  
 Danielle Vlazny  
 Rosalie Vondrashek \*  
 James Walch & Sue Reinke Walch \*  
 Phil & Sue Wheeler \*  
 John & Gretchen Winter \*

2 Anonymous

**PLATINUM**

David & Susan Ahlquist \*  
 Elizabeth J Atkinson \*  
 Uldis & Lorena Bite \*  
 Lori A Blauwet  
 Kerrie & Bob Bonacci \*  
 Jason & Kelly Boynton \*  
 Mark Branstad  
 Melissa Brinkman \*  
 Bill & Victoria Cliby \*  
 John & Karen Edmonds \*  
 Larry Karnitz & Sara Felts \*  
 Jerome Ferson \*  
 Donald & Sharon Gabrielson \*  
 Dennis & Ann Gastineau \*  
 Peter & Wendy Gay \*  
 James & Elizabeth Hannon \*



**LEADERS  
 IN GIVING**

**LEADERS IN GIVING RECOGNITION LEVELS**

Alexis de Tocqueville Society: \$10,000+  
 Diamond: \$7,500-\$9,999  
 Emerald: \$5,000-\$7,499  
 Platinum: \$3,000-\$4,999  
 Gold: \$2,000-\$2,999  
 Silver: \$1,000-\$1,999  
 Bronze: \$750-\$999  
 Builder: \$500-\$745

**GOLD**

Chad & Brandee Anderson \*  
 John Atkinson  
 Marie-Christine Aubry MD \*  
 David & Maureen Bahr \*  
 Mark E. Baker \*  
 Scott & Andrea Beck \*  
 Jon Bedsted \*  
 Tisha Bolger \*  
 Jeff & Emily Bond \*  
 Patrick Botz  
 Drs Laura Breeher & Kent Carlson  
 Zachary Buchan  
 Michael & Sally Burns \*  
 Toni & Jeff Burns \*  
 Dennis Busche & Jane Brandhagen \*  
 J. Keith Campbell M.D. \*  
 Kurt & Jane Carlson \*  
 Paul & Bridget Carns  
 Paul & Margaret Carpenter \*  
 Jesse & Veronica Cummins  
 Jack Cusma & Dee Dee Zwettler \*  
 Paul & Jane Dahlen \*  
 Justin Davis  
 John Duncan  
 Sharon & Wayne Dunemann \*  
 Bethanie Flattum  
 Harper Family Foundation \*  
 Kevin Glaser  
 Gregory & Amy Gores \*  
 Roland E & Marilyn G Graves \*  
 Jeffrey & Susan Hazard \*  
 Tony & Pamela Helgemoe in memory of Ruby  
 & Jerry Jerabek  
 Marcus & Margy Hendrickson \*  
 Char & Norm Hepper \*  
 Mark Hettinger \*  
 Chad & Shauna Hirsch \*  
 Bruce Horazdovsky \*  
 Daniel & Georgia Hurley \*  
 Linda & Frank Iossi \*  
 Marlea & Joe Judd \*  
 Sanjay & Manju Kalra \*  
 Mark & Kyle Klarich \*  
 Karl & Susan Krecke  
 Edward & Linda Laskowski \*  
 James Leary

Bob & Kathy Lohr \*  
 Carl & Evangeline Lundstrom \*  
 John McMeeking  
 Robert & Ruth Miles  
 Mark Mitchell  
 John C & V Arlene Morris \*  
 Constance & Wayne Mullins \*  
 Randall Newman \*  
 Charlotte Nordrum \*  
 John & Pat Noseworthy \*  
 Brian & Gayle O'Neill \*  
 James & Marcia O'Brien \*  
 Christopher & Barb Orlovski \*  
 Mary & Jeff Owen \*  
 Darrell & Elaine Pardi \*  
 Larry & Gail Pease  
 Bret & Karen Petersen \*  
 Mark & Ivy Pillers \*  
 Rachel Pringnitz \*  
 Angela Roche \*  
 Gayle & Doug Rock \*  
 Dick & Joanne Rosener \*  
 Stephen & Janey Russell \*  
 Charlotte H Rydberg \*  
 Jay H Ryu & Patricia A Pellikka \*  
 John & Susan Schaffner \*  
 Michelle Schmitt \*  
 Mike & Sandy Silber \*  
 Melanie Swift, MD  
 James & Patricia Talen \*  
 Sandra Taler & Andrew Westreich \*  
 Jeffrey & Pamela Thompson \*  
 Bryan & Maureen Tousley \*  
 Todd & Kerry Truax  
 Bill Volkmar & Sheri Brandvold \*  
 Randall & Patricia Walker  
 Margaret Weglinski \*  
 Joe & Dar Weis \*  
 Dennis & Lilli Weivoda \*  
 Mary Wellik \*  
 Drs Constance Williams & J Michael Bostwick \*  
 Megan & Jeremy Williams \*

4 Anonymous

**SILVER**

William & Caroline Adamson \*  
 Dave & Barb Agerter  
 Allen Aksamit Jr MD \*  
 Rob & Heidi Alberts \*  
 Julie & Patrick Aldrich  
 Glenn & Christine Alexander \*  
 Timothy & Rodica Alexander  
 Sean Allen  
 Peter & Bari Armadio  
 Alan & Nadine Anderson \*  
 Ann & Clark Anderson \*  
 Francesca Anderson \*  
 Paul & Sue Anderson \*  
 Karen L Andrews \*  
 Marjorie & Scott Anfinson \*  
 Aneel Ashrani & Deepika Bhargava  
 Chris Austin \*  
 Jodi Austin-Thompson  
 Darin & Lauren Baker  
 Nathan P Bakke  
 Kirk P. & Ellen N. Balderes  
 John & Tamsin Barlow  
 Anne & Mark Baron \*  
 Kathy & Paul Bartemes  
 John Beck \*  
 Pamela Becker \*  
 Debbie Bennes \*  
 Keith & Johanna Berge  
 Dan & Sandy Berndt \*  
 Matt Bernstein & Rhoda Lichy \*  
 Audrey Betcher \*  
 Dr Allen & Gail Bishop \*  
 Robert Bleimeyer  
 Linda Bly \*  
 Sherry Boedecker \*  
 Jennifer M. Boland  
 Oualid Boulekbache  
 Jennifer & Colin Boysen \*  
 Richard Bram  
 Michael Branson \*  
 Brent & Summer Brockman  
 Robert Bromley \*  
 Robert D & Julie K Brown \*  
 David & Melissa Brudwick \*  
 Carla Brunsvold \*  
 Charles & Pamela Brust \*  
 Terry & Kathleen Buzzell \*  
 Jeanne Byron & Family

**SILVER CONTINUED**

Shelly & John Caldwell  
 Nicole Callahan \*  
 Kim Carpenter-Hakes & Gail Hakes  
 Roberto Cattaneo & Iris Kemler Cattaneo \*  
 Keith J. Christensen & Dawn Deines-Christensen  
 Grant & Mary Christiansen \*  
 Mark Christopherson MD \*  
 Jeremy Clain & Andrea Kattah  
 Michael & Meredith Clark \*  
 Karl & Susan Clausen  
 Clifton & Lisa Colborn \*  
 Christopher & Suzanne Colby \*  
 Neil Columbus  
 Kevin & Melissa Connor \*  
 Steven & Laurie Cook \*  
 Paula Craigo & John Lieske \*  
 Sarah & Casey Crane  
 Dan & Susan Crowell \*  
 Gene & Sandy Dankbar \*  
 Michael Davis  
 Randy L Davis  
 Richard Dean \*  
 Amy Degnim \*  
 Robert & Ilse Diasio \*  
 Eugene & Joanne DiMagno \*  
 David Dines \*  
 Mary & Jeffrey Dobbins \*  
 Vincent Donahoe II  
 Debra Donahue \*  
 Julie & Joseph Doppler  
 Robert Douty  
 Holly Duck  
 Livius & Margaret D'Uscio  
 Charyl Dutton Gibbs  
 Jeffrey Ehrhart & Marion Pitts \*  
 Marla Einck \*  
 Phillip & Susan Einspahr \*  
 Sally Enders  
 Tony & Terri Enquist \*  
 Dr Raul & Joan Espinosa \*  
 Dr Titus Evans Jr \*  
 Lori Ewoldt  
 Susan & Edward Prosser \*  
 Mark Federspiel & Linda Gregory \*  
 Conrad Fingerson  
 Bob & Cynthia Fleming \*  
 Lynn M Flickinger & Stephan R Hanna \*

Denis Foo Kune, Ph.D.  
 Janelle M Fox \*  
 Jim & Wendy Francis \*  
 Thomas Freeman & Alan Skogerbo \*  
 Lydia Gammell \*  
 Hector Garcia  
 G Richard & Pat Geier  
 Jerianne Gonser  
 Jonathan & Sheryl Good \*  
 Paul & Terry Gorman \*  
 John & Jacquelyn Gosse \*  
 Bobbie Gostout  
 Matthew Graham \*  
 Jenna Granle  
 Karen & Fred Graszler \*  
 Deb Groehler \*  
 Aaron & Deborah Gross  
 Jack Gross & Julie Domaille  
 Bryan Groves  
 Bruce & Doreen Gudlin \*  
 Jeanne Guyse \*  
 Katrina Hacker  
 Cheryl J & Marc A Hadaway \*  
 Chad and Sara Hanson  
 Liz Hauger \*  
 Scott & Pat Heck \*  
 Corey & Lisa Heimer \*  
 Paul & Heidi Heimgartner  
 David A & Nancy M Heinz  
 Tom & Lou Ann Hellmich  
 Mark & Michele Heminger \*  
 Troy & Jane Herman  
 Jerry Hermann  
 Susan Hind  
 Dr. Stephen F & Eleanor M Hodgson \*  
 Steven Hoerle \*  
 Kimberly Hogstad  
 George & Sandra Hohberger \*  
 April Horne & Gary Komaniecki \*  
 Christopher Hostak  
 John & Gloria Hostak  
 Deven Hui \*  
 Shirley Hultz \*  
 Betty A Hutchins \*  
 John Huxsahl & Cindie Severson-Huxsahl \*  
 Sabrina M Idso  
 Doug & Dawn Inman  
 David & Carrie Inwards \*  
 Debby & Jim Jacobsen \*  
 Tom & Kristie Jacobson \*

Kari & Jason Jadin \*  
 Mircea Jerghiuta  
 Ryan & Kjersten Jimison  
 Jane Jirele Blaine & Tom Blaine  
 Amy & Rick Johnson \*  
 Leigh J & Judy Johnson \*  
 Robert & Janet Johnson \*  
 Terry Johnson  
 Dwight Jones \*  
 John & Joan Joyce \*  
 Michael & Brenda Kalmbach  
 Brad Karon & Valeria Cristiani  
 Tammy Karp  
 Steve Kavka & Nancy Wieben  
 Lori Keith \*  
 Gary & Kathy Kerska \*  
 Becky Knorr  
 Laura Kotten \*  
 Jason & Anna Krueger \*  
 Mark & Dawn Krupski \*  
 Kirsten & Al Kuehl \*  
 Rosemary A Kuzma \*  
 Robert & Charlene Kyle \*  
 Kathryn Mallwitz \*  
 Trudi Lane  
 Eric & Jane Lantz \*  
 Julie & Jeffrey Larson Keller \*  
 Jonathan Lee  
 Sandra D Lee, BSN, RN  
 Raymond Legrand & Lisett Comai-Legrand \*  
 Tina Liebling & Mark Liebow \*  
 Chad & Lavonne Liedl \*  
 Judy & Rick Lien \*  
 Scott & Jolene Litin \*  
 Leslie & Robert Litwiller \*  
 Christine Lohse & Scott Przybelski \*  
 Cheryl Lovlien \*  
 Diane Mack  
 Timothy Mackey \*  
 Leo & Katie Maguire \*  
 Megan & Mike Malugani \*  
 Jacob Malwitz & Chad Weaver \*  
 Mary Marnach \*  
 William & Margaret Marshall \*  
 Peggy & Ross Mattke \*  
 Edward & Raeann McLeod \*  
 Pamela J McCabe \*  
 Sean McEligot & Julia Gerak McEligot \*  
 Matthew M McLeish  
 Jim McReynolds

David Mead \*  
 Mike & Laura Meiners \*  
 Kerry & Cresta Melcher \*  
 Judi & Dan Mersel \*  
 Joanna Meyer  
 Kathleen Meyerle & James Marttila \*  
 Cecelia Meyers \*  
 Amanda J Mickelson  
 Dr Fletcher & Deborah Miller  
 Jason & ReNee Miller  
 Lance Milner \*  
 Ryan & Megan Moore \*  
 Ancy & Bob Morse \*  
 Margaret Moutvic \*  
 Ann M Moyer  
 Mike & Melissa Mueller \*  
 Lisa Muller \*  
 David Murray  
 Jean Murray & George Huston \*  
 Tony Narr  
 Maria Navarro  
 Brad Nelson  
 Marty & Mary Nelson \*  
 Denise & Jarred Nesbitt  
 Julie Neumann \*  
 William & Sharon Nichols \*  
 Jack & Cheryl Nimitz \*  
 Bruce Nix \*  
 Dale Nordquist \*  
 Richard & Patrice Nordstrom  
 Jenny & Don Nosbisch \*  
 Erin & Bill Nystrom  
 Dave & Terra O'Brien  
 Helen M O'Connor \*  
 Karl & Theresa Oestreich \*  
 Dale & Shelly O'Groske \*  
 Kerry Olsen \*  
 Lance & Karen Oyen \*  
 Dudley & Peg Parsons \*  
 Dan & Terri Penz \*  
 Ryan L Peters  
 Melissa & Devon Post  
 Jerry Pott & Maureen O'Brien-Pott \*  
 Anne Pronschinske \*  
 Angela Puffer  
 Dawn Rainey \*  
 Basem Ratrout  
 Matt & Melissa Raveling \*  
 Kimiyo Raymond  
 Jane & Herbert Reiman \*  
 Jim Renn \*  
 Chad & Jennifer Ridgeway \*  
 Marilyn Riley \*  
 Bruce & Nancy Rohde \*  
 Wilfredo Roman Catala  
 Phillip & Kathryn Rossman  
 Alyson Roth  
 Lisa Ryan  
 Eric & Linda Sanders  
 Gail M Sauter \*  
 Steven E & Tami R Sawyer \*  
 Scott R Scaley  
 Al & Julie Schafer \*  
 Dr Daniel J Schaid PhD  
 JoAnn Scherger \*  
 Barbara Schmerbauch  
 Bradley & Mary Schmidt  
 Aaron & Heidi Schmitz  
 Jay Schneider  
 Christopher & Diane Schoenherr  
 Michael & Shayla Schoenoff  
 Mark & Melinda Schroeder  
 Jeremy & Krista Schubert \*  
 Lori & Ed Schultz \*  
 Gary & Rebecca Schwartz \*  
 Kirk Severson \*  
 James & Judy Seward \*  
 Larry & Wendy Shannon \*  
 William & Heidi Shaughnessy  
 Patrick & Karen Sheedy \*  
 Linda Shepherd \*  
 Phil & Carolyn Sheridan \*  
 Andrew & Jennifer Shulha \*  
 Lynne Shuster \*  
 David & Donna Sippel \*  
 Stephanie Slack  
 Nicole Smith in memory of Felix Overton  
 Shane Smith  
 Carolyn & Matt Sogla \*  
 Karenjoy Spaeth \*  
 Carol & Steve Sparrow  
 Melissa & Ray Sperber \*  
 Nathan Staff  
 Steven Stenhaus \*  
 Randy & Nancy Stevens \*  
 David & Kathy Stien \*  
 Emanuel & Marie-Antoinette Strehler \*  
 Peter & Karen Streit \*  
 Don & Stephanie Supalla \*  
 Kevin & Julie Sutter \*  
 Andrea Swanson \*  
 Kenneth Swanson \*  
 Harry & Delores Swedlund \*  
 Cynthia Sweeney \*  
 Keith & Laura Swenson \*  
 Glenn & Pat Tabor \*  
 Jay & Sarah Talwalkar  
 Angelina Tan \*  
 Christina Tatting \*  
 Stephen Thibodeau  
 Hadley Thompson \*  
 Paul & Barb Tieskoetter \*  
 William O Tobin  
 Mark & Genise Troutman \*  
 Timothy & Kathryn Tucker \*  
 Mike & Katie Vance  
 Pete Vedell  
 Carl & Phyllis Von Wald \*  
 The Wald Family  
 Jennifer Walter \*  
 Daryl Walters  
 Michael Walters  
 Kimberly Askew Wanek & Matt Wanek \*  
 Marge Ward \*  
 Denise Wedel \*  
 James & Ruth Weispfenning \*  
 Gordon & Carla Weller \*  
 Tony & Carol Wells \*  
 Randy & Linda Wendt \*  
 Dana & Sue Whaley \*  
 Steven Will  
 Julie Anne Williams \*  
 Jaymi Wilson \*  
 Ben Wiltsie  
 Bruce Winter \*  
 Charles Withers \*  
 Bob & Debbie Witte \*  
 Benjamin & Christine Wolf  
 Pamela Wright \*  
 Lynn K. Wytaske \*  
 Ron & Judy Yaggy \*  
 Timothy Yoder  
 Karen & Steven Ytterberg \*  
 Michael & Barbara Zinser \*  
 25 Anonymous



**BRONZE**

Robert & Elizabeth Ahern  
 Mark & Marie Anderson  
 Dr Raymond & Judith Auger \*  
 Sara Barnes  
 Lisa A Beck  
 Haraldur Bjarnason & Katrin Frimannsdottir  
 Paula Boldt \*  
 Christine Boos  
 Dwight Brown  
 Jeffrey & Marie Brown \*  
 Shawn & Shelly Buryaska \*  
 Gena & Pat Cahill \*  
 Heidi & Stuart Campbell \*  
 Janet Carlson  
 Patricia Carlson  
 Ed & Jenny Chestolowski \*  
 Chunhee Richard & Kyung Mi Choo  
 Brian, Kathy, Olivia & Anna Cook \*  
 Dennis & Mary Dahlen  
 Tim & Karen Daly \*  
 AJ Daniels \*  
 Virginia Darling  
 Jaime Davila  
 Sharon Deml \*  
 Jeff Doherty \*  
 Sherilyn & Colin Driscoll \*  
 Joseph & Lindsay Duda \*  
 Lynn Estes  
 Karen Evans  
 Judy Felten \*  
 Scott & Darci Fenske \*  
 David Field  
 Pam & Al Fisher \*  
 Tony & Brenda Fyles \*  
 Nina Garces & Joe Gliniecki \*  
 Pete Giesen \*  
 Les & Dee Gill  
 James & Donna Glaser \*  
 Hough Family \*  
 Deb Hagen-Moe \*  
 Wanda Hagquist \*  
 Hal & Patricia Harris  
 Tom Hartman \*  
 Robert Hedman \*  
 Lois Heeringa \*  
 Donald Hensrud & Natasha Matt-Hensrud \*  
 Jim & Pat Heydon \*

Douglas J Hildebrandt  
 Linda & Doug Hillenbrand \*  
 Becky & David Hinchley \*  
 Gregory & Diane Hird \*  
 Amy Hoerle \*  
 Cary & Kathy Johnson \*  
 Verlyn Johnson \*  
 Bill Kalmes \*  
 Kejal & Orhun Kantarci  
 Brenda Kochevar \*  
 Jake & Jennifer Kugel  
 Deb Lafferty \*  
 Sharon Lager \*  
 Arie & Suzanne Lagerwaard \*  
 Tricia Lanzel \*  
 Dorothy Larsen \*  
 Bethany Larson  
 Sara Lassila  
 Terri Lewis \*  
 Walt & Darcy Ling \*  
 Amy & Dave Mahon \*  
 Julie Manville-Camp  
 Leonard Matoush  
 Curtis & Mary Meier \*  
 Julene Miller \*  
 Jeremy Moe  
 Bernward Goettke & Robin Molella \*  
 Ray & Sally Morse \*  
 Reed E Nordyke \*  
 Megan M O'Byrne \*  
 Mark & Jeri Ostrem \*  
 Denny J Padgett  
 Tamra A Parsons \*  
 John & Roxanne Pederson \*  
 Ken & Rosemary Persons \*  
 Sharon K Peterson \*  
 Tanya Petterson \*  
 Jill Rock \*  
 Dr Daniel Rohe \*  
 Walt & Sarah Rothwell \*  
 Jane Ryan \*  
 Dan & Lynn Schmitz \*  
 Jennifer & Robert Schubert \*  
 Troy Schuler \*  
 Diane Dahm MD & Jay Smith MD  
 Michael Soper \*  
 Patrick Spinler \*  
 Mary St.Marie \*  
 Patty Stricke \*

Barbara Tatzel  
 Deb Teske  
 Jennifer & Troy Teske  
 Pamela & Michael Thieke \*  
 Cory Tomlinson  
 Stephen & Keri Trenkner  
 Carolyn Rohrer Vitek \*  
 Randall Vrabel \*  
 Brian & Vivian Weinshenker \*  
 Deborah West \*  
 Jennifer Westendorf  
 Trisha White \*  
 Michael Wills  
 Eric J Wollan  
 Tracey Wozniak Rutherford \*  
 Elizabeth Zimmermann \*  
 Jean Zuroski \*

4 Anonymous

# THANK YOU FOR LIVING UNITED

Memorial and Tribute gifts are given in honor of a loved one or friend as a lasting remembrance of helping others in partnership with United Way.

This listing includes Corporate Giving, Event Sponsorship, Grant support and In-Kind Support of \$1000+ \*\*Indicates Investments of \$10,000+.

## CORPORATE LEADERSHIP GIFTS & GRANT SUPPORT

125 Live  
Accounting & Tax Associates Inc  
Alan C Anderson Chartered CPA  
Allegra  
Associated Bank  
Benchmark Electronics, Inc.  
Boldt Family Fund Inc  
Border States Electric  
Bremer Bank\*\*  
Carl & Verna Schmidt Foundation  
Costco  
Crenlo Cab Products\*\*  
CRW architecture + design group  
Davies Printing Company  
Domaille Engineering, LLC  
GEOTEK  
Granite Equity Partners  
IBM  
Jim & Judy Sloan Foundation  
KTTC & Fox 47\*\*  
Land O' Lakes Inc.  
Mayo Clinic Rochester\*\*  
McNeilus Truck and Manufacturing, Inc.\*\*  
Merchants Bank  
Nelnet  
Olmsted County\*\*  
People's Energy Cooperative  
Pepsi Cola Bottling Company  
Pharmaceutical Specialties, Inc.  
PlastiComp Inc.  
Premier Banks  
Principal Financial Group  
RBC Wealth Management  
Rochester Athletic Club  
Rochester Area Foundation\*\*  
Scheels\*\*  
Seneca Foods Corporation

Smith, Schafer & Associates, Ltd.  
Strut  
Think Mutual Bank\*\*  
U.S. Bank\*\*  
UnitedHealth Group  
Weis Builders  
Wells Fargo Bank\*\*  
West Bank  
Western Digital\*\*  
Xcel Energy Corporation

## LIFETIME GIFTS HOPE LEGACY SOCIETY

Jeffrey Allman  
Anne & Carl Berberich  
Emily Joy Colbenson  
Maureen Gwynn  
Donald Halley  
Debbie Hoffman  
Betty Hutchins  
Lois A Jorstad Trust  
Beverly Livesay  
Doug & Sue Luebbe  
Joanne & Dick Rosener  
Bonita & Russell Schultz  
Judy & Jim Sloan Foundation Janet Notheis  
Volkmar - Endowed Fund for Kids  
1 Anonymous

## GIFTS IN MEMORY OF

John Bohls  
Dr. Sam Bydon  
Sylvia Darlene Goetzman  
Margaret Hoffman  
Ruby & Jerry Jerabek  
Felix Overton

## GIFTS IN HONOR OF

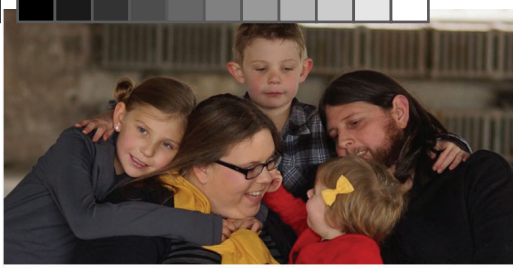
Paul & Sue Rohde  
John & Donna Wold  
Judy Young  
Ron Zwicker



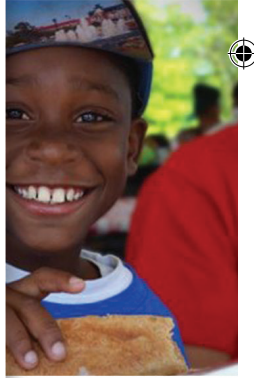
*"Your investment in our community has resulted in life-changing events for individuals in need."*

*Jerome Ferson  
UWOC President*

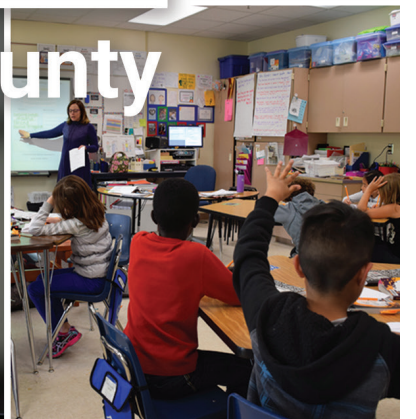
We endeavor to ensure the accuracy of this Leaders in Giving list of donors. If your name is incorrectly listed in any way, please accept our apologies and bring the error to our attention so our records may be corrected. To make corrections, contact us at Donor Stewardship, (507)287-2000 or [rd@uwoelmsted.org](mailto:rd@uwoelmsted.org).



# LIVE UNITED



# United Way of Olmsted County





United Way of Olmsted County  
 903 West Center Street, Suite 100  
 Rochester, MN 55902  
 Email: uwoc@uwolmsted.org  
 Phone: (507) 287-2000

NONPROFIT ORG.  
 U.S. POSTAGE PAID  
 ROCHESTER, MN  
 PERMIT NO. 39

ADDRESS SERVICE REQUESTED

**THANK YOU**  
**FOR LIVING UNITED**

If you or someone you know needs help call United Way's resource referral line 211 to learn more about assistance available in your area.  
 DIAL 2-1-1 or 1-800-543-7709.

**2·1·1**

**United Way  
 of Olmsted County**

